

de Stolfe
Journal ★★★
Broadsheets

Taiban Church

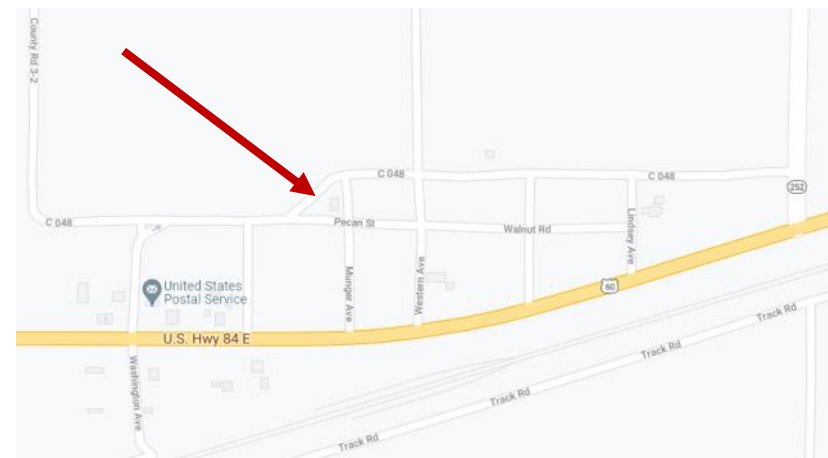
Visited on July 28, 2021

All photos are by RG de Stolfe, except where noted.



A friend needed to go to Albuquerque and asked if I would go along. We left my house in the late morning of Wednesday, July 28, 2021. Albuquerque is about five hours away from Lubbock, and we would get there in the late afternoon. Our route was to go to Clovis, then to Fort Sumner, Santa Rosa, and I-40 over to Albuquerque. We made one stop by my request to a little town just east of Fort Sumner called Taiban where an old church building is.

This old church is located in De Baca County of New Mexico in the unincorporated town of Taiban. It was the First Presbyterian Church of Taiban located on the northwest corner of the intersection of Pecan Street and Munger Street. The current, private owner, S.B. Eldridge, registered the structure to be a historic property with New Mexico, a process that appears to be between 2006 and 2008 and officially designated on August 14, 2009. This registration happened right around the 100 year mark for the structure. From the information with the registration forms, the church was built in 1908 possibly using building plans supplied by the Presbyterian Church (the national organization?). But, a square bell tower offset to one side is a common feature with Presbyterian churches. The application states that the “Taiban Presbyterian Church is a good example of an early 20th century rural vernacular church”. It also states that the building was probably built from a standardized plan blending “Neo-Classical and Greek Revival elements”. By 1960, the building was no longer a church and the bell tower was removed.



Left & above: Google Maps



View from the southeast.



View from the northeast.



View from the southeast.



View from the southwest.



Two of the last light fixtures after the church gained electricity in possibly the late 1950s.



Detail of window from the east side of the building.



Looking towards the north end of the interior, back door to the left.



Looking towards the south end of the interior, front door to the left.



View looking out the back door. Straight ahead in the center is Taiban Peak. The rest behind that is the caprock of the Llano Estacado. The pile of rubble in the middle is what is left of the Taiban school.

Taiban
Presbyterian
Church

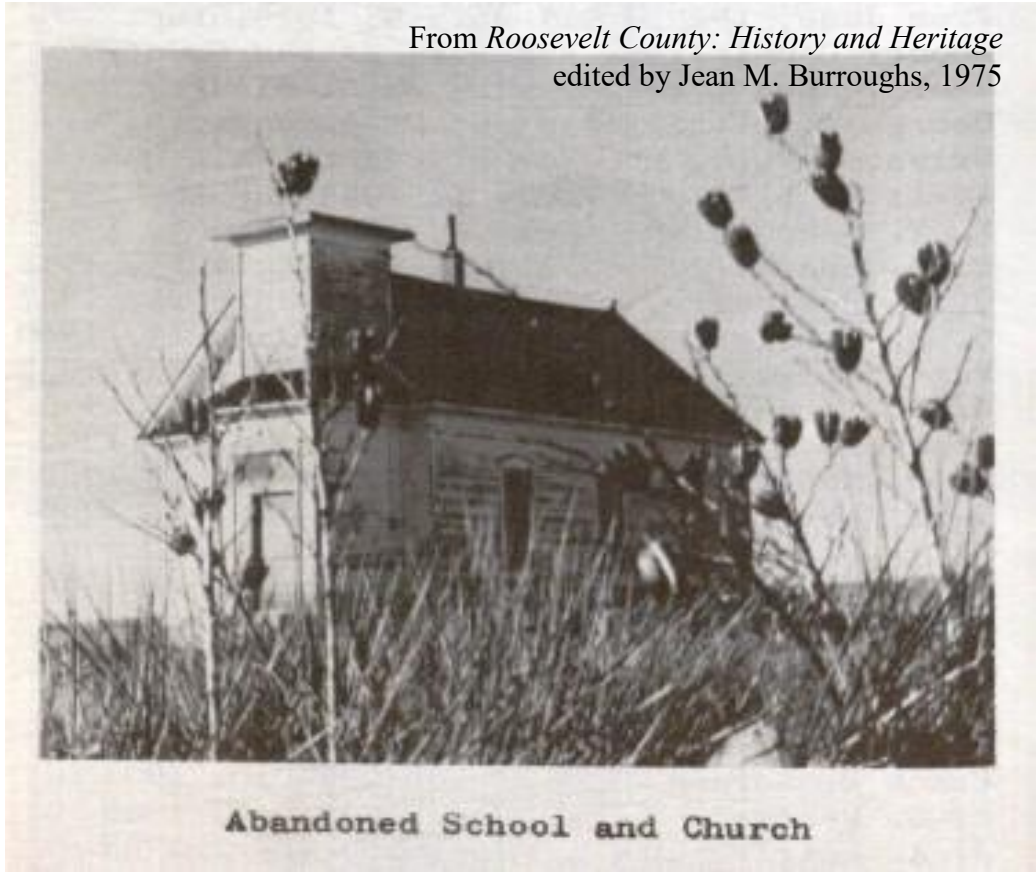
Taiban school



Circa 1955

Photos by
Susanne Eldridge

From *Roosevelt County: History and Heritage*
edited by Jean M. Burroughs, 1975



Abandoned School and Church



Circa 1925

CHURCH DIRECTORY.
PRESBYTERIAN
 REV. J. R. CARVER, Pastor.
 Preaching, 2nd Sunday in each
 month; Hours, 11 a m & 8 p m.

Taiban Valley News, 1917



Read More

- City of Dust, a blog by JM House of Norman, Oklahoma. Post of Tuesday, January 10, 2012 (and additions through 2018): <https://cityofdust.blogspot.com/2012/01/whiskey-and-devil-taiban-new-mexico.html>
- Application For Registration, New Mexico State Register of Cultural Properties for Taiban Church by Susanne Eldridge: <http://www.nmhistoricpreservation.org/documents/cprc/TaibanChurch.pdf>



RG Video



Make sure to watch the video of my visit to the Taiban Church on my YouTube channel:

<https://youtu.be/tEzc2lWcxTU>

de Stolfe Journal ★★★ Broadsheets

I hope you enjoy these de Stolfe Journal Broadsheets!

I started these broadsheets as a means to reduce the number of pages for the regular journal issues. (And let's face it, you don't have time to read 50+ pages of the regular journal when not every topic in them might be of interest to you!) My broadsheets are single topics of special interest in a horizontal page format and restricted to ten pages or less (usually).



Producer, RG de Stolfe

Robert-George de Stolfe
PO Box 16156
Lubbock, Texas 79490
806.470.5867

de Stolfe Journal.....

The de Stolfe Journal is a publication made by Robert-George de Stolfe. The first issue was published in March 1986 as the de Stolfe Journal and published irregularly until 1998 (17 issues total). The *Candid* variety of the Journal started in July 2012, with a production of over 60 regular and special issues, with now the *Candid* dropped from the name. Archives of all issues—including the original ones (1980s-1990s)—are available on the website: www.destolfe.com

Publisher/Owner/Editor

Robert-George de Stolfe

Graphics/Layout*


Robert-George de Stolfe

**Unless otherwise accredited, the graphics and photos are by Robert-George de Stolfe or possibly from public domain. In some cases, the original source cannot be determined.*

This publication is published solely as a digital format. All content—unless attributed to some other source, including web sources, or from public domain sources—is original content by Robert-George de Stolfe. Public domain sources might or might not be specifically attributed.

The reader of this content has right to download and view the content for personal enjoyment. However, if someone wants to use the content for any other purpose, permission must be requested in writing and approved by Robert-George de Stolfe.

Copyright © 2021, Robert-George de Stolfe

-  Journal Archive www.destolfe.com
-  Top Hand Graphics www.tophandgraphics.com
-  RG eMail rgdestolfe@yahoo.com
-  RG LinkedIn www.linkedin.com/in/rgdestolfe
-  RG YouTube www.youtube.com/channel/UCxqM8QWWaVPwzLa0ccZ46Cw

www.destolfe.com