

de Stolfe
Journal ★★★
Broadsheets

Double Aermotor Windmills

Visited on August 10, 2021

All photos are by RG de Stolfe, except where noted.



I was on Highway 380 going west, which goes all the way to Post. I made a stop on the way. Interestingly, I drove past a certain spot by a couple of miles before I stopped and turned around to go back! This spot is about 12 miles east of Post on Highway 380 and was a place where a couple of abandoned houses stood in an area on the northeast end of a matrix of pumpjacks. What caught my attention and what made me turn around to go back was at the larger homestead on the south side of the street. There were double windmills!

The two windmills are Aermotor windmills with probably 8' wheels. They were right next to each other with a structure in between. They looked like they once both pumped into a now gone water tank on the middle structure. The entire assembly was made of steel. Both of the abandoned homesteads seemed rather creepy, but they also seemed like they were once grand rural houses.



Since it was late summer, these wild sunflowers were all over the place.



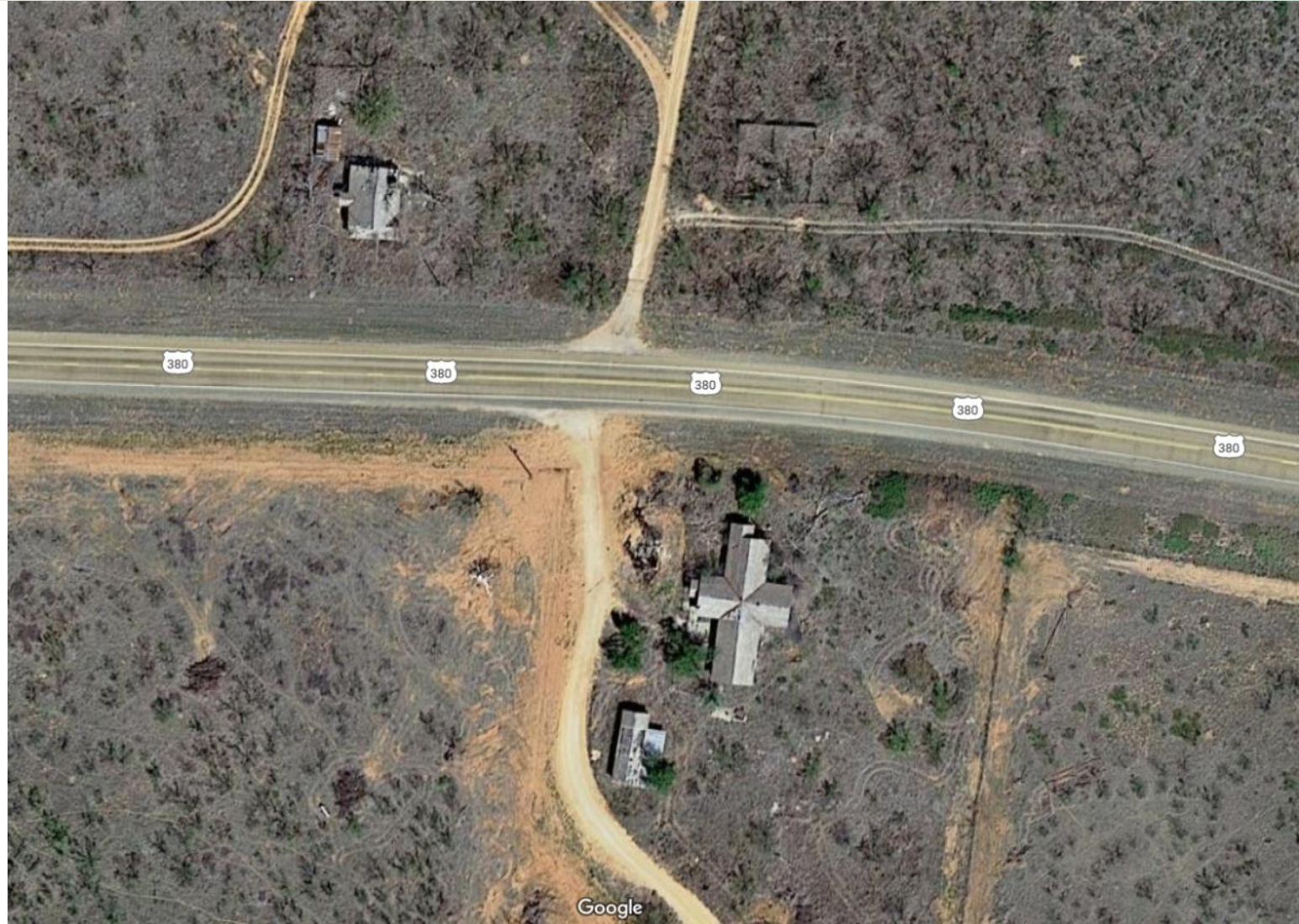
These are the two windmills with the water tank structure in the middle. This was all in front of the homestead.



Google Maps

These maps show the location of the homestead with the double windmills, located about 12 miles east from Post on Highway 380.

Looking at the overhead photo to the right, the SE quadrant shows the homestead where the windmills are. The NW quadrant is another much smaller abandoned homestead where you can faintly see the fence line. In the NE quadrant, the small square is a couple of pens with a water tank in the corner. This whole area is near the edge of a matrix of pumpjacks.



Google Maps

Google



Google Maps











de Stolfe Journal ★★★ Broadsheets

I hope you enjoy these de Stolfe Journal Broadsheets!

I started these broadsheets as a means to reduce the number of pages for the regular journal issues. (And let's face it, you don't have time to read 50+ pages of the regular journal when not every topic in them might be of interest to you!) My broadsheets are single topics of special interest in a horizontal page format and restricted to ten pages or less (usually).



Producer, RG de Stolfe

Robert-George de Stolfe
PO Box 16156
Lubbock, Texas 79490
806.470.5867

de Stolfe Journal.....

The de Stolfe Journal is a publication made by Robert-George de Stolfe. The first issue was published in March 1986 as the de Stolfe Journal and published irregularly until 1998 (17 issues total). The *Candid* variety of the Journal started in July 2012, with a production of over 60 regular and special issues, with now the *Candid* dropped from the name. Archives of all issues—including the original ones (1980s-1990s)—are available on the website: www.destolfe.com

Publisher/Owner/Editor

Robert-George de Stolfe

Graphics/Layout*




Robert-George de Stolfe

**Unless otherwise accredited, the graphics and photos are by Robert-George de Stolfe or possibly from public domain. In some cases, the original source cannot be determined.*

This publication is published solely as a digital format. All content—unless attributed to some other source, including web sources, or from public domain sources—is original content by Robert-George de Stolfe. Public domain sources might or might not be specifically attributed.

The reader of this content has right to download and view the content for personal enjoyment. However, if someone wants to use the content for any other purpose, permission must be requested in writing and approved by Robert-George de Stolfe.

Copyright © 2021, Robert-George de Stolfe

-  Journal Archive www.destolfe.com
-  Top Hand Graphics www.tophandgraphics.com
-  RG eMail rgdestolfe@yahoo.com
-  RG LinkedIn www.linkedin.com/in/rgdestolfe
-  RG YouTube www.youtube.com/channel/UCxqM8QWWaVPwzLa0ccZ46Cw

www.destolfe.com