

# de Stolfe Journal ★★★ Broadsheets

## Canton, Mississippi

On our way back from Florida to Colorado, we took the route from I-10 to I-55 north towards Memphis. Dad had predecided that he wanted to go to downtown Canton to revisit a place where he worked for several months in the mid 1990s, and we ended up staying there well over three hours! Canton was the site of a film production, *A Time To Kill*, where Dad was the dailies person. We walked around the town square with the courthouse in the middle and stopped at the tourism



office. We talked with a nice lady there who gave us a very nice tour of some of the important buildings related to the several films shot in that little town. We also looked through their local museum that presented the history of the town itself. It was quite a nice visit (despite being ridiculously hot and humid!) and the personal tour was awesome.



*This is the Madison County courthouse located in Canton, Mississippi.*



As with most towns of the late 1800s, Canton is centered on a square with a county courthouse in the middle. Lining the square on all sides across each street is the commercial area, rows of buildings containing businesses, and usually extending a block or more down each street. This idyllic little town in Mississippi with its great buildings and long history is also home to something a whole lot more modern. That “something” is the modern filmmaking. This is because several films were shot at various locations in this town including *Mississippi Burning* (1988), *A Time to Kill* (1996), *My Dog Skip* (2000), *O Brother, Where Art Thou?* (2000), and many others.



*South side of the square.*

*South side of the square.*





*East side of the square.*



*East side of the square.*

*North side  
of the  
square.*



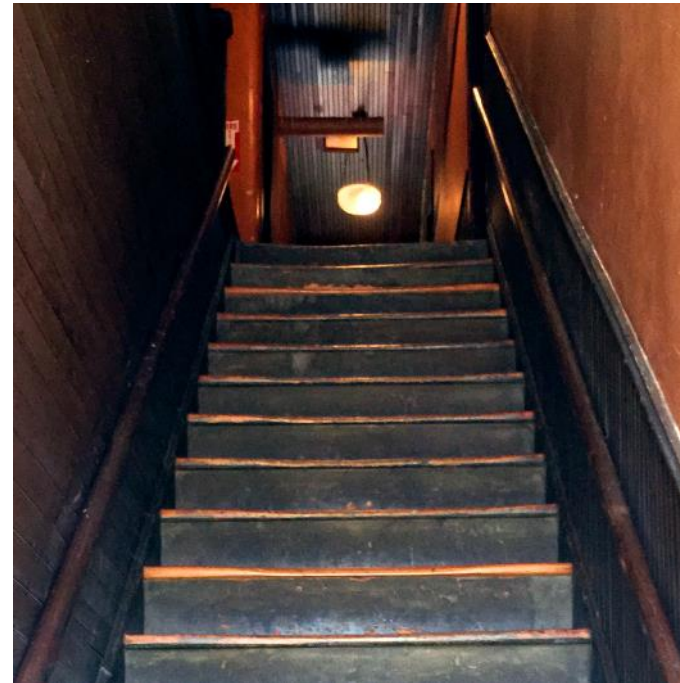
*This building on the west  
side of the square houses  
the Canton Tourism  
Office, which is also the  
Convention & Visitors  
Bureau & Film Office.*





Modern Lights

*These two streetlights are the only ones not modern for they are historic in that they have been in various films.*



*This stairway goes to the second floor of a historic building in Canton, Mississippi that was used in a film.*



This corner building is historic, however, part of the outside and the inside are fake! The outside porch was added for a film and is not original to the building. Both floors contain sets for the film, *A Time To Kill*. The bottom photos show the coffee shop set. The set of stairs is real and accessed from a door outside (as is typical of historic buildings), and the middle photo shows an office set.





*The Canton Tourism office posted this photo on their Facebook page. Here is Ms. Charlotte Wilson (Tour Coordinator), myself, and Dad sitting inside the coffee shop set used in A Time To Kill.*

Ms. Charlotte Wilson, who is the Tour Coordinator for Canton Tourism, holds a model of the building used for the set.

She was a delight to show us the film sets, the Willie Morris & My Dog Skip Movie Museum, and the Canton Museum of History.





*Lovely decorative iron work!*



*Lots of great details!*



*Old style hydrant (modern painting).*



*Courthouse gazebo.*



*What's funny about this hexagonal floor is that the exact same floor is in my Mom's bathroom.*



One of the dramatic scenes in *A Time To Kill* is the burning of a house. Dad says that the grassy area below is where the house was that was burned (no longer there).



*This building above was used in a scene of A Time To Kill.*

*This cemetery was a few blocks from the square and across the street from where the house burning was..*



# de Stolfe Journal ★★★ Broadsheets

## I hope you enjoy these de Stolfe Journal Broadsheets!

I started these broadsheets as a means to reduce the number of pages for the regular journal issues. (And let's face it, you don't have time to read 50+ pages of the regular journal when not every topic in them might be of interest to you!) My broadsheets are single topics of special interest in a horizontal page format and restricted to ten pages or less (usually).



Producer, RG de Stolfe

Robert-George de Stolfe  
PO Box 16156  
Lubbock, Texas 79490  
806.470.5867

# de Stolfe Journal.....

The de Stolfe Journal is a publication made by Robert-George de Stolfe. The first issue was published in March 1986 as the de Stolfe Journal and published irregularly until 1998 (17 issues total). The *Candid* variety of the Journal started in July 2012, with a production of over 60 regular and special issues, with now the *Candid* dropped from the name. Archives of all issues—including the original ones (1980s-1990s)—are available on the website: [www.destolfe.com](http://www.destolfe.com)

### Publisher/Owner/Editor

Robert-George de Stolfe

### Graphics/Layout\*



Robert-George de Stolfe

*\*Unless otherwise accredited, the graphics and photos are by Robert-George de Stolfe or possibly from public domain. In some cases, the original source cannot be determined.*

This publication is published solely as a digital format. All content—unless attributed to some other source, including web sources, or from public domain sources—is original content by Robert-George de Stolfe. Public domain sources might or might not be specifically attributed.

The reader of this content has right to download and view the content for personal enjoyment. However, if someone wants to use the content for any other purpose, permission must be requested in writing and approved by Robert-George de Stolfe.

Copyright © 2021, Robert-George de Stolfe

-  Journal Archive [www.destolfe.com](http://www.destolfe.com)
-  Top Hand Graphics [www.tophandgraphics.com](http://www.tophandgraphics.com)
-  RG eMail [rgdestolfe@yahoo.com](mailto:rgdestolfe@yahoo.com)
-  RG LinkedIn [www.linkedin.com/in/rgdestolfe](http://www.linkedin.com/in/rgdestolfe)
-  RG YouTube [www.youtube.com/channel/UCxqM8QWWaVPwzLa0ccZ46Cw](http://www.youtube.com/channel/UCxqM8QWWaVPwzLa0ccZ46Cw)

[www.destolfe.com](http://www.destolfe.com)