

# de Stolfe

*Journal* ●●●●●●●●



Spring 1 2022 | 11.2

# Contents

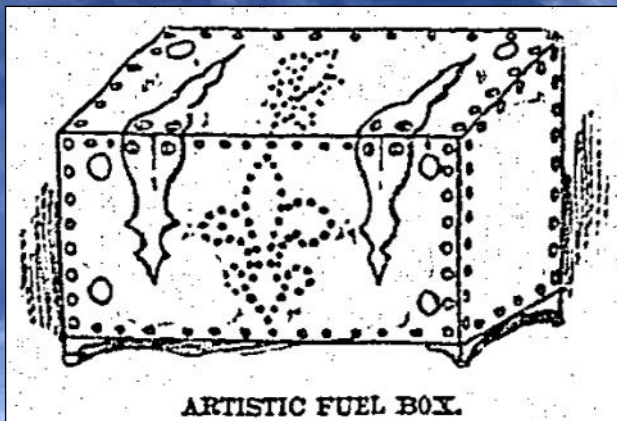
Spring | 2022 | 11.2

The page numbers correspond to the PDF pages.

Covers activities in March and April 2022.  
The page numbers correspond to the PDF pages.

- 2** Contents & On The Cover
- 3** Comments by RG
- 4** Word for Life
- 5-6** Random Things
- 7-8** Roman Londinium Discovery
- 9** Diggin' Up Diamonds
- 10** USS Alabama
- 11-18** Visiting Shamrock, Texas
- 19-21** Carlisle Cemetery
- 22-23** Discovering Pears Soap
- 24** Camel Corp?
- 25-26** 1970 Lubbock Tornado
- 27** Final Thought
- 27** The Fine Print

Learn more about this box in the next issue!



ARTISTIC FUEL BOX.

*The Evening Chronicle.*  
*Saturday, September 9, 1893. Page 4.*

## On The Cover



*On my way to the hotel in Shamrock, I went past this iconic building shown here and on the cover. This is the Tower Station & U-Drop Inn Café, a gas station and café built in 1936 along the now historic Route 66 through Shamrock, Texas. This building is featured in the movie Cars.*

We live in the 21st century! Anywhere you see a web link like this, click it to go automatically to the webpage that it references! (Try it now!)

[www.destolfe.com](http://www.destolfe.com)



# Comments by RG

## Lots of Things To Come!

Happy Spring! We are now well past the cold of winter and well into spring weather and warmer temps. As for me, my garden is full of new growth and budding galore all across the garden. Unfortunately, this issue did not have enough room to include things gardening nor food related! That will have to be either for the next issue or for a special issue.

Not since Thanksgiving have I travelled or gone anywhere past Lubbock or a nearby county. Buuuuutt... travels are coming! My first small travel was last weekend when I drove up to a little town called Wellington to attend a cooking demo/catered meal by long time chuck wagon cook Kent Rollins at his coffee shop/café there. Instead of driving back home that night in the dark through areas where I've never been, I decided to stay the night in another little town just to the

north called Shamrock and leave the next day home. Part of the trip went how I planned out, while part of the trip took a maverick turn into a whole other direction! About a quarter of this issue covers that trip. Take a look.

Just under two months ago, Dad and a mutual friend went on a road trip from Colorado to Florida, each for different reasons, with the destination being Florida. They planned to stop in Arkansas to mine for diamonds! So take a look at that story along with another place where they stopped.

I have my usual collection of random and interesting stories throughout the rest of the pages.

Another trip is coming up very soon that will produce content for well more than one issue of the



Producer, RG de Stolfe

journal and will probably need to break into three issues in order to keep the journals a moderate size (and by moderate, I am saying that the journals should stay under 30 pages, which is fair). For a hint of one stop, think Tennessee. There will be a wide variety of topics and place that we will visit that I will report as either a snippet or as more in depth. I am excited to see what and how it will play out for both the trip and for reporting it in my journals!

I uploaded a new YouTube video based on my trip last weekend. Click the link to the left bottom to watch *Driving Historic Route 66 In The Texas Panhandle*. Make sure to watch it to the end!

I hope you like this issue, and I hope you also look forward to the coming content that will be featured in future issues!

Enjoy!

Driving Historic Route 66

## Driving Historic Route 66 In The Texas Panhandle



Watch "Driving Historic Route 66—<https://youtu.be/bEeqHF1uEAA>

# Word For Life

## Story of Ai—Part 1

The Story of Ai is a story about following instructions and doing things in proper timing.

The Israelites had just come from defeating Jericho and were on a victory high. However, not all was well! In Joshua 7:1,

*But the children of Israel committed a trespass regarding the accursed things, for Achan the son of Carmi, the son of Zabdi, the son of Zerah, of the tribe of Judah, took of the accursed things; so the anger of the LORD burned against the children of Israel.*

In essence, this was like a “little” poison in the water! It makes the whole of the water undrinkable! Now Joshua sent spies to scout the next little kingdom of Ai. The men reported that the number of people were few and that Joshua should only send a few men to overtake Ai. However, it ended in a humiliating defeat! So in the people’s manner of wailing,

*7:6 Then Joshua tore his clothes, and fell to the earth on his face before the ark of the LORD until evening, he and the elders of Israel; and they put dust on their heads.*

However, Joshua’s response was not exactly the best,

*7:7 ...And Joshua said, “Alas, LORD GOD, why have You brought this people over the Jordan at all—to deliver us into the hand of the Amorites, to destroy us? Oh, that we had been content, and dwelt on the other side of the Jordan!”*

God was not exactly happy with this response nor with the people’s faithlessness!

*10 So the LORD said to Joshua: “Get up! Why do you lie thus on your face? 11 Israel has sinned, and they have also transgressed My covenant which I commanded them. For they have even taken some of the accursed things, and have both stolen and deceived; and they have also put it among their own stuff.”*

This next part is quite sobering,

*12 “...Neither will I be with you anymore, unless you destroy the accursed from among you.” 13 “...you cannot stand before your enemies until you take away the accursed thing from among you.”*

God then gave instructions for everyone to gather by tribes, families, households, and individuals in the morning. God then said,

*15 “Then it shall be that he who is taken with the accursed thing shall be burned with fire, he and all that he has, because he has transgressed the covenant of the LORD, and because he has done a disgraceful thing in Israel.”*

So in the morning, Achan was brought to Joshua who then said,

*19 ...My son, I beg you, give glory to the LORD GOD of Israel, and make confession to Him, and tell me now what you have done; do not hide it from me.*

Achan then replied,

*20 ...Indeed I have sinned against the LORD GOD of Israel, and this is what I have done: 21 When I saw among the spoils a beautiful [Babylonish]*

*garment, two hundred shekels of silver, and a wedge of gold weighing fifty shekels, I coveted them and took them. And there they are, hidden in the earth in the midst of my tent, with the silver under it.*

They checked his tent with the items right where Achan said.

*23 And they took them from the midst of the tent... and laid them out before the LORD.*

This next act is even more sobering,

*24 Then Joshua, and all Israel with him, took Achan the son of Zerah, the silver, the garment, the wedge of gold, his sons, his daughters, his oxen, his donkeys, his sheep, his tent, and all that he had, and they brought them to the Valley of Achor. 25 ...So all Israel stoned him with stones; and they burned them with fire after they had stoned them with stones. 26 Then they raised over him a great heap of stones..., ...the name of that place has been called the Valley of Achor...*

This is an example of where one man’s transgression cursed the entirety of the family and belongings, even unto death! God does not mess around with the sins of man! He is serious when He says to confess your sins and purge yourself of them from your life that you may not suffer the same death. Today, we have Jesus as our substitute for the death as He took our place for that penalty. Then,

*26 ...the LORD turned from the fierceness of His anger...*

In part 2, we will see how God directed the Israelites to attack and take over the kingdom of Ai.

# Random Things

## Months of Holidays

March and April have quite a few holidays and celebration days! Take a look at this list.

March 2	Texas Independence Day
March 13	Daylight Savings Time Started
March 14-18	Spring Break (generally)
March 14	Pi Day! ( $\pi$ )
March 16	John 3:16 day
March 16-17	Purim
March 17	St. Patrick's Day
March 20	First day of Spring
April 1	Don't Be a Fool Day
April 15	Good Friday
April 15-23	Passover
April 17	Easter



*My pie for Pi Day 2022!  $\pi$*

### **GUN MAKER.**

**S. HAWKEN**, for the last thirty-seven years engaged in the manufacture of the Rocky Mountain rifle in **ST. LOUIS**, would respectfully say to the citizens of **Denver**, **Auraria**, and his old mountain friends, that he has established himself in the Gun business, on Ferry street, between Fourth & Fifth, next door to Jones & Cartwright's, **Auraria**, and is now prepared to manufacture his style of rifles to order. Repairing done at short notice.

**N. B.** In addition to the above, he is prepared to do light iron work of all kinds. Door keys made and repaired—Instruments also repaired.

### **GUN MAKER.**

S. Hawken, for the last thirty-seven years engaged in the manufacture of the Rocky Mountain rifle in St. Louis, would respectfully say to the citizens of Denver, Auraria, and his old mountain friends, that he has established himself in the Gun business, on Ferry street, between Fourth & Fifth, next door to Jones & Cartwright's, Auraria, and is now prepared to manufacture his style of rifles to order. Repairing done at short notice.

N.B. In addition to the above, he is prepared to do light iron work of all kinds. Door keys made and repaired—instruments also repaired.

*Rocky Mountain News.*

*Wednesday, March 14, 1860. Page 3.*

*My grocery store had a sale on these tulips. They were pretty and they came from Holland!*



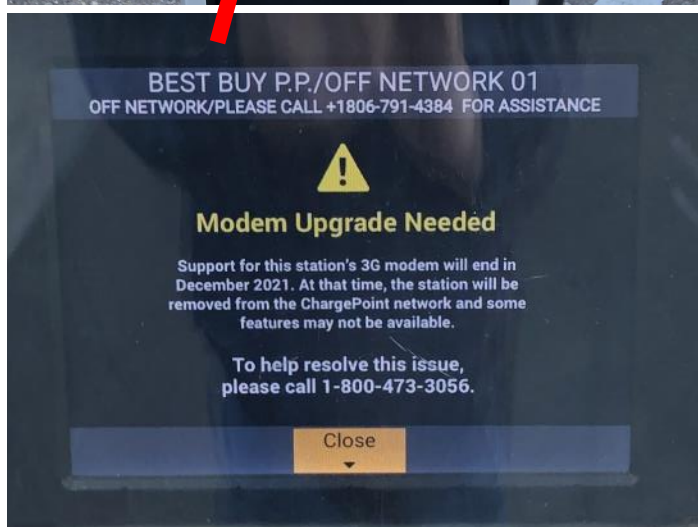
*The carnations came from another grocery store, and I got several colors. They lasted for nearly three weeks!*



# Random Things

## Natural Egg Colors

When you go to the store to buy eggs, they are most often white with the “specialty” eggs usually being some brown color. However, if you have chickens and especially a wide variety of chicken breeds, then you know that the colors of the eggs vary widely. Here are some of the colors you will find and which breeds likely laid those colors.



*This is a photo Mom took with her iPhone of this amaryllis in her back yard in July 2019.*



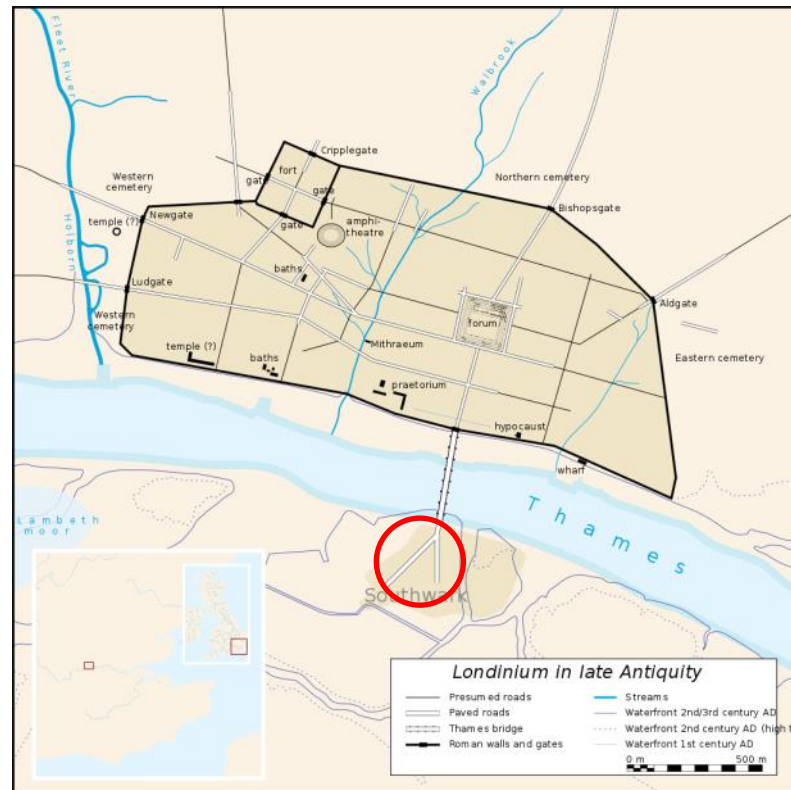
*Something I bought last November.*

# Roman Londinium Discovery

The Romans occupied most of the island now called Great Britain up to a point called Hadrian's Wall. What we now know as London, the capital, the Romans called Londinium and established that settlement around 47 to 50 AD. In the process of construction for a new building in Southwark, the evidence of a mosaic floor emerged creating much excitement. An Art Newspaper article states "The location of the find is outside the boundaries of what would have then been Roman Londinium, and the archaeologists suggest it could have been the site of a large mansio, a roadside resting place with rooms used by Roman officials. The mosaic would have featured on the floor of a colourfully decorated dining room, of which some painted wall fragments were also discovered at the site." I always find it interesting how much the earth is built up from older "ground levels"!

## Read More

- <https://www.theartnewspaper.com/2022/02/23/intricate-roman-mosaic-found-london>
- <https://hyperallergic.com/713581/large-roman-mosaic-discovered-in-central-london/>
- <https://www.bbc.com/news/uk-england-london-60466187>
- <https://www.washingtonpost.com/world/2022/02/28/roman-mosaic-discovery-london-southwark/>



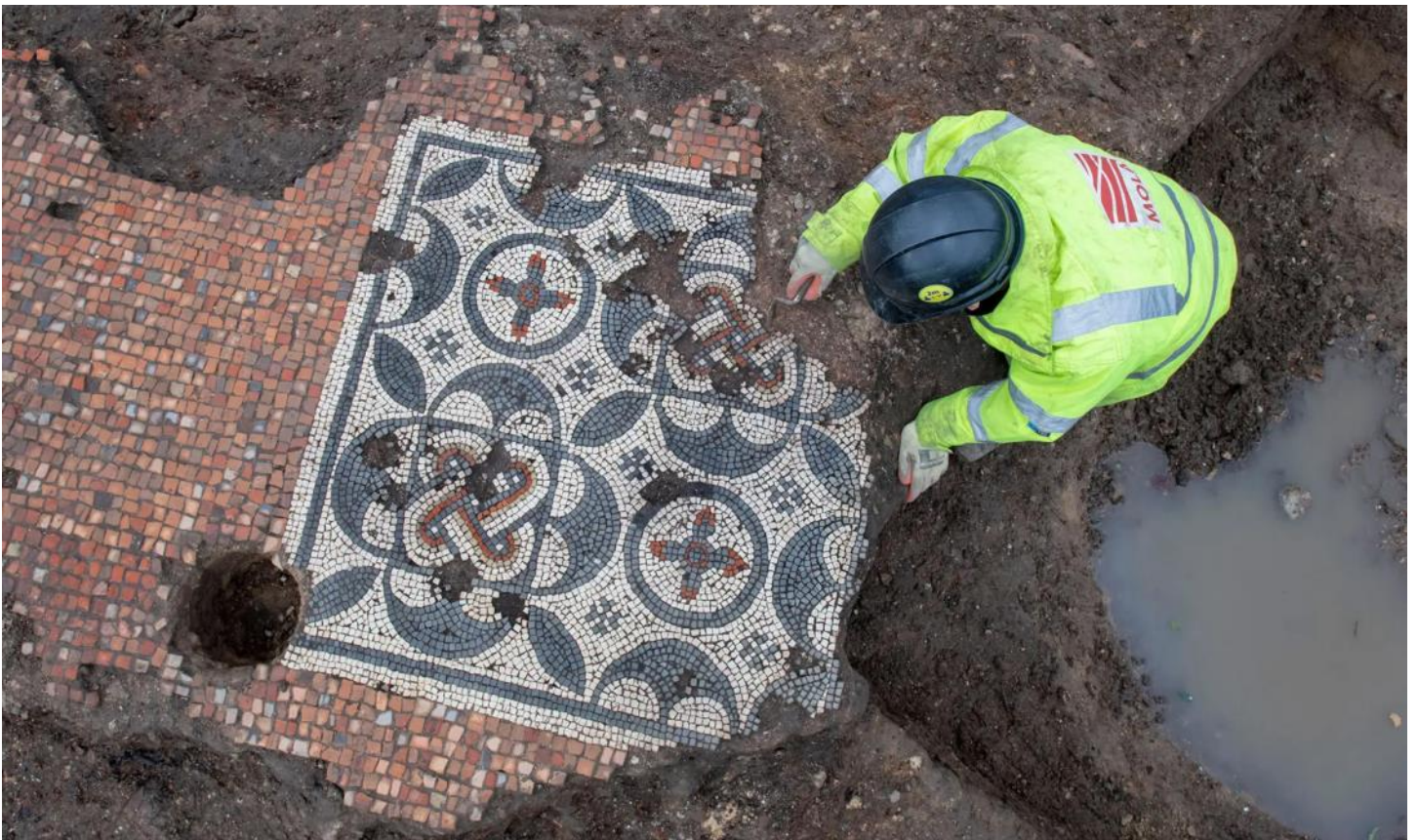
*The site of the discovery of the mosaic floor is in Southwark on the south side of the Thames River, not far from London Bridge and a building called The Shard.*



# Roman Londinium Discovery



*One thought is that this was the floor of a dining room either as part of a private residence or as a rest stop as it was outside of the general borders of Londinium..*



# Diggin' Up Diamonds!

Back in early March, Dad and a mutual friend went on a driving trip from Colorado to Florida. A planned part of the trip was to stop in Arkansas to dig for diamonds! Arkansas has an unusual geology

where diamonds are found in the state. Arkansas has a law (?) where anyone can dig for and keep what ever gems they find. There are designated places to dig for these gems. Here are two places they went.

## Crater of Diamonds State Park



## Ron Coleman Mining, Inc



*Dad by the grounds ready to mine diamonds.*

*Scott found a large crystal, probably quartz.*

# USS Alabama

Once Dad and our mutual friend got to Mobile, they stopped to visit the USS Alabama, located at the

USS Alabama Battleship Memorial Park, just south of I-10 along Mobile Bay.



*The outside of the USS Alabama.*



*On the deck of the battleship.*



*That's a big propeller!*



*Hmmm... "lead"!*

# Visiting Shamrock, Texas

Back in December, I was watching one of the YouTube videos for Kent Rollins when he said at the end to keep an eye out on their website for events at his coffee shop in Wellington, Texas. So, I went over to the website over several weeks thinking that there would be events in January and February. However, there were no events at the coffee shop until April. Once I decided I wanted to go to one of the events, which were on Saturday evenings, I chose a date and paid for it. The date I wanted was full, so I chose the event on April 23. (This was the same day as the Master Gardener plant sale.) At the same time, I also made a reservation for a hotel in Shamrock, a town on I-40 that is about 30 minutes to the north. While I could have just driven back home after the event, because this was an area I have never driven through before, I thought it best to stay the night and leave fresh the next day and make a weekend of it so I could see some things on the way home. I mapped out a route to get to Wellington and decided on a different route back home.

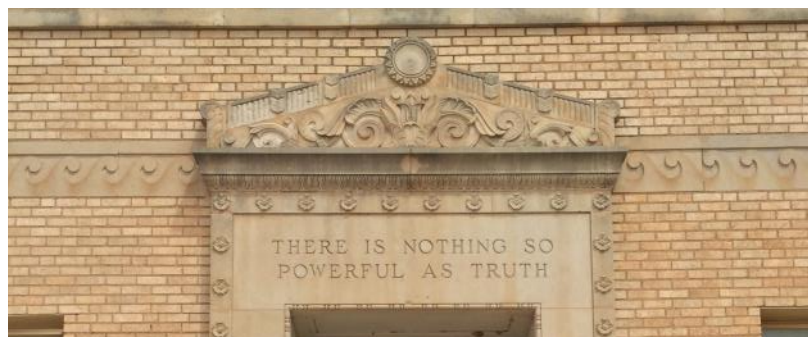
On Saturday, April 23, I went to Chick-fil-A after leaving the house figuring that it would be a few hours before the event, which started at 5:30. I took the Loop around to Idalou Highway, then headed east. This was at about 1:30 PM. From there, I would take the same route as to the pumpkin farm where I went in the fall by going north from Ralls on US 62. I would go past the pumpkin farm to Floydada, from where US 62 then continued east to Matador. This whole area is rural country of farming or cattle. A little past Matador, I stopped briefly at a little rest stop with a historical marker for Tee Pee City. From there, I continued to Paducah where US 62 then went north. I would continue driving north for the rest of the traveling. I stopped for a few minutes at the Cottle County courthouse in Paducah to look at the historical markers and to take some photos. The next notable town was Childress. Here is where I took a quick side trip since I was good on time. I diverted northwest on US 287 to a little town called Estelline. This was the little town where our Greyhound bus stopped in the early morning on Saturday, July 16, 1994! This was a regularly scheduled stop at a little café for food. I talked about this place in the journal before in my writing about



*Historical markers about Tee Pee City.*



*Cottle County courthouse in Paducah, Texas.*



# Visiting Shamrock, Texas



*Café on Saturday, July 16, 1994. Estelline, Texas.*

my bus trip to Arizona. It was a diversion of about 15 miles until I got to the place where the café was. Today, the building is totally abandoned and halfway towards completely collapsing. By the looks of the building in 1994, it was well on its way even then! Round trip, it was only a diversion of 30 minutes. Back in Childress, I was only about 30 minutes away from Wellington, so I continued back north. I was planning to stop at the bridge over the Red River to take some photos. But the bridge was reduced to a single lane for repairs of the wall on one side. Mobile stoplights at each end halted traffic for each side as traffic crossed over back and forth. Besides that, the river was completely dry, no water at all, just sand! About halfway, US 62 split off and went east, but I continued straight north on US 83. I made another brief stop for a historical marker a few miles before Wellington. Once I got there, I turned on to 9th street, which took me right to the shop. On the way, I stopped at the old Wellington train depot, which had a small section of tracks, for a few photos, then went to the courthouse square. I intended to stop at the northeast corner of the courthouse square to get photos of the Ozark Trail marker. I drove all the way around the square before parking arriving about 5:00 PM. The doors for the event opened at 5:30 PM, and it looked like most of the attendees were already there, mostly waiting in their vehicles. I walked around the courthouse getting some photos of it and of some other markers before the doors opened.



*Building on Saturday, April 23, 2022. Estelline, Texas.*



*Historical marker just south of Wellington about the Red River through Collingsworth County by Captain Randolph Marcy.*

# Visiting Shamrock, Texas

Once the doors opened, we all eventually got in and went to the far back of the place to the same outdoor area where they shoot some of their videos when they are in Wellington (because they live in Oklahoma on their ranch). We got our drinks on the way and found places to sit. They had thin tables set up like a classroom setting with the starting course and glasses in place. Along with our drinks (I had tea while others could also have wine or beer), the appetizer was cowboy caviar and chips. After a short while, Kent was at the front and ready to go. As they served the courses, he did a cooking demo relating to that course we were eating. The next course was a rather fancy salad with strawberries and a raspberry dressing along with sourdough biscuits. He demoed the biscuits and talked about how he makes them. The main course was a plate of chicken fried steak and gravy, green beans, and garlic mashed potatoes. The food was great, but also quite filling! Kent demoed the making of the steak along with talking about various other things and answering questions. Throughout the evening, their little dog (one of four they have) called Major wandered around for scraps and ear scratches. I think it was after the main course when we had a break a few minutes. After that, the final course was dessert of bread pudding (no raisins!) with a whiskey cream sauce and campfire cowboy coffee. They highly recommended putting some of the cream sauce in the coffee! Good! At the end, he told stories and answered questions before we were done. After that, people could stay a while for photos, questions, book signings, and chitchat. Kent was in person just the same as he is in the videos, absolutely no different. I talked briefly with them, got a photo, then bought a few things in the store before I left.

The sun was still out, but sunsetty, when I left around 8:30. I went back on 9th street to US 83 north to Shamrock, which was less than 30 miles. About halfway there near Lutie, a cow near the road apparently thought the grass was greener! Fortunately, the shoulder was wide enough to avoid having an accident! I'm sure some rancher was none too happy about a wandering cow! Once I got to Shamrock, I made my way to the Tower Station & U-Drop Inn Café, which was lit up in green neon with



*Kent Rollins' Cowboy Coffee shop in Wellington, Texas.*



*Cowboy Kent Rollins with his dog Major (one of four, but only one present).*

*Me with Kent Rollins and his wife, Shannon.*



# Visiting Shamrock, Texas

a little bit of red neon. The sky was past sunset into a dark blue, not quite black yet. I got some photos before heading to the hotel, which was right along I-40. I stayed at the Sleep Inn.

The next day, which was Sunday, I checked out of the hotel and sat in the car deciding where I wanted to go first. I thought that I would go east then make my way west. Leaving just before noon, I went about 8

miles from Shamrock to where there is an intact original bridge of Route 66 that went over some train tracks that went under there at one time, tracks of the Chicago, Rock Island, and Gulf Railroad. I ended up missing the exit and almost went to the Oklahoma border near Texola to turn around. Once I got on the access road on south side (which in this area, the access roads go both ways on each side of the interstate), I went back to where the bridge was. This original Route 66 road is now just the access road for the interstate, but it still has sections of the original concrete road with newer parts from previous repairs in between. I stopped on the other side of the bridge after crossing over it to take photos. I walked off the width of the bridge and measured 23 boot lengths, which equates to the bridge being about 24 feet wide within the curbs. Now that is for two way traffic! For the driving lanes, that is basically the same as today for the type of road, but most modern bridges will also have a 4 foot shoulder on each side for a full width of about 32 feet. Some of the earlier cars were smaller and narrower, like with Model Ts and Model As. Recall that Route 66 was commissioned in 1926 with the full road construction finished by the late 1930s. I decided I would take the original road all the way back to Shamrock, and to take it from Shamrock until it connects back with I-40. Once I got back to the other main road of the town, I stopped again at the Tower Station/U Drop Inn I stopped at last night to get some day shots. Behind



*Tower Station & U-Drop Inn Café in Shamrock, Texas*



*Route 66 bridge about 8 miles east of Shamrock.*



*Location of tracks*

# Visiting Shamrock, Texas

the station were six very modern Tesla charging stations! Interesting dynamic! I looked around for a few minutes. It was closed as was most of the other places I visited because it was the weekend. From there, I drove up to the interstate to get gas since I was just under half a tank from yesterday's driving. I drove back down the main road to Water Tower Park, where there was a historical marker. Apparently, Shamrock has the tallest water tower that is still in use. The park featured a bunch of interpretive panels telling the history of the water tower and related things. While at the park, I got video of two tower sections of a wind turbine driving down the road. I left from the park and went a few blocks away to where the historical museum is (which was also closed). Specifically, I wanted to see the recently restored Magnolia Gas Station, which is owned by the museum. A short distance away was the Blarney Stone Plaza where a stone from the Blarney castle in Ireland was on display along with another historical marker. I took the main road back to Route 66 and went west to the interstate.



*One gas bay of the Tower Station.*



*Six Tesla charging stations behind the Tower Station.*



*Original concrete water trough supplied by the water tower.*

One of the original concrete troughs located at the foot of the Shamrock Water Tower which was used for watering horses and wagon teams

*Shamrock water tower, 176' high, completed in 1916, 75,000 gallons.*

# Visiting Shamrock, Texas

The next little town from Shamrock was McLean. I stopped there hoping to find a restaurant since up to this point, I had only eaten a banana from the hotel. But McLean was much smaller than Shamrock, which only had a few restaurants I was not interested to eat at. However, while on the Route 66 part of McLean, I did see and stop at a tiny gas station of the era for photos. Cattycorner to that was a small monument of the Ten Commandments of granite. I did drive by the Devil's Rope Museum dedicated to barbed wire, but they were closed, of course. Continuing for another ten miles, I stopped at the Gray County Safety Rest Area. Like many of the other Texas rest stops, this one was well designed



*Restored Magnolia Gas Station in Shamrock, Texas*



*First Phillips 66 Station in Texas, built in 1929.*



*Blarney Stone Plaza in Shamrock, Texas.*



*The Ten Commandments in granite, installed by the citizens of McLean in 2006. Exodus 20:3-17, John 14:15.*



*The Blarney Stone set into a monument.*

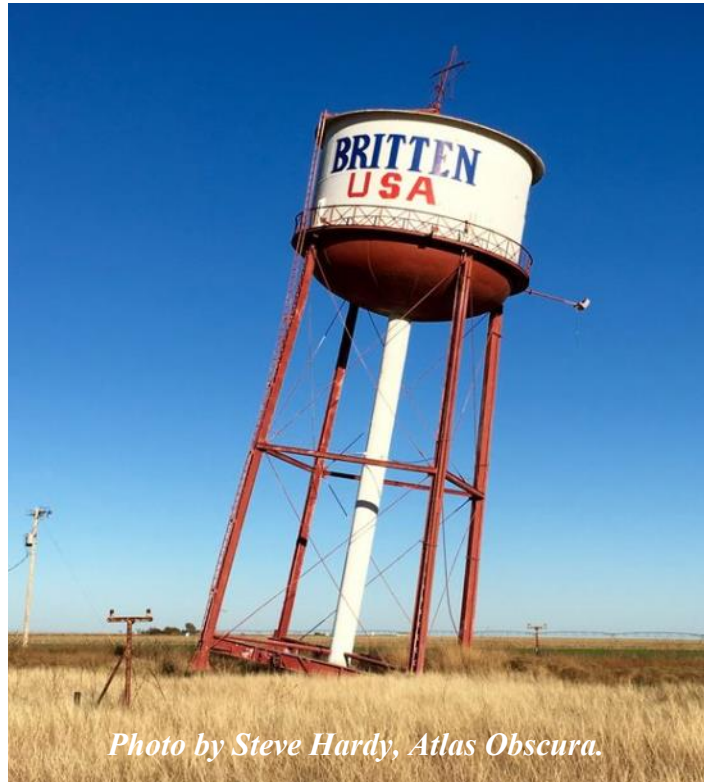
# Visiting Shamrock, Texas

and landscaped and included exhibits inside the building. A short distance away on the other side of the interstate was the Alan Reed Rest Area, which had a whole different look and feel. It was sometime after the rest stop that I realized that I might have missed the exit I needed to go south to Turkey and Quitaque. I had basically one of two or three options. I could either turn around and go back to the road I wanted, take the next main road going south, or drive to Amarillo and take I-27 home. I knew there would be very few restaurant options going south until I got home, so I decided that I would forgo that part of the trip and go to Amarillo instead.

That just means I will need to plan a separate trip to go to Turkey and Quitaque (which is only about 90 miles from Lubbock, about the same distance as to Snyder where I lived, but in a different direction). I drove past the little town of Groom and noticed a strikingly obvious leaning water tower! I did not stop to see it, but apparently, the relocated tower was purposely installed at an 80 degree angle as part of a marketing gimmick by Ralph Britten to attract customers to his business. Also in Groom is a large metal Cross on the grounds of a ministry. There are several of these types of Crosses in various locations, including one along I-27.



*The Gray County Safety Rest Area.  
Many signs say to watch out for rattle snakes!*



*Photo by Steve Hardy, Atlas Obscura.*



*An exhibit inside the Gray County Safety Rest Area.*



*Photo by Tony Hisgett, Atlas Obscura.*

# Visiting Shamrock, Texas

Less than an hour later, I got to the outskirts of Amarillo and stopped at The Big Texan for food! You might recall that I stopped and ate here in November after the ranch rodeo finals. I knew that the food would be expensive, but because I had not eaten and did not spend as much money on the trip as I guessed, I said heck with it! I ate nearly the same meal I had the last time, sirloin with mashed potatoes and a salad. I also decided that I would try a slice of their chocolate cake. (Look at the photo of the cake! Texas sized!) After eating, I wanted to go find the Slug Bug Ranch, an attraction much like the Cadillac Ranch but with VW bugs. I apparently missed it on the way to Amarillo for it was about 20 miles back east. I decided just to head home. To get back to the interstate, I took the round about way by going on Loop 335 to an area called Zeta and getting on FM 1541 south taking me right to I-27 just past the Canyon exit. That route cut out all of the main town traffic. The only other stop I made was at the Hale County Rest Stop where I have reported about before, buildings looking like grain silos having a small exhibit inside. I got home a little after 6:30 PM.



*The Big Texan in Amarillo, Texas.*



*Texas sized cakes! I had a slice of the chocolate cake, which is four layers. (I ate it over three days!)*



*Hale County Rest Stop near Abernathy, Texas.*





An area named Carlisle (not to be confused with another town of the same name elsewhere in Texas) is in west Lubbock along 19th Street. There is an old cemetery on the north side of the road existing to back when it was still in the middle of nowhere along a road. But first, here is what the Handbook of Texas (by the Texas State Historical Association) states about Carlisle.

*CARLISLE, TEXAS (Lubbock County). Carlisle is on State Highway 114 [19th Street] and the Santa Fe Railroad\* three miles east of Reese Air Force Base\* and five miles west of Lubbock in west central Lubbock County. It was named for rancher W.A. Carlisle and grew up around a school in the early twentieth century. A congregation of the Church of Christ met there from 1918 to 1923. By 1927, the Carlisle school was one of twenty-six rural educational districts in the county. Carlisle combined with Hurlwood, Wolfforth, and Foster to form the Frenship Rural School District in 1935.*

*The town had two stores and was known as the site of the largest vineyard in Northwest Texas during the 1940s. In 1983, Carlisle was still listed as a community, but on January 27, 1984, it was annexed to Lubbock.*

**\*A few notes.**

This entry was written originally in 1952 and last updated in 1994. A few things have changed!

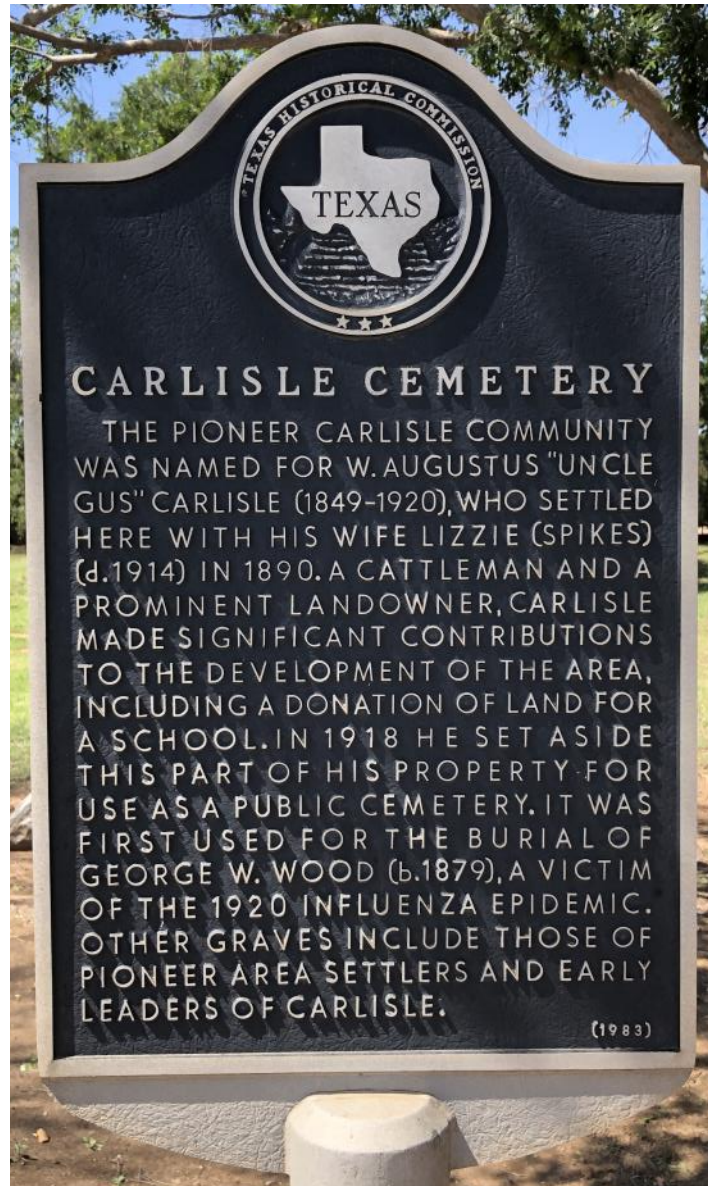
**Santa Fe Railroad:** This is probably referring to the train tracks located about a mile to the south that meet up to 19th Street further west of Carlisle. The named area of Carlisle sits in between 19th Street and the tracks. The tracks still exist, but I do not know how much of the tracks are still used nor how often they are used.

**Reese Air Force Base:** As it was later called, the construction of the Air Corps Advanced Flying School started in 1941. The base officially closed in 1997 and later became the Reese Technology Center (a technological business park) that exists today.

# Carlisle Cemetery



This overhead view from Google Maps shows the approximate size of the cemetery and how things have built up around it, including the widening of 19th Street.



## Carlisle Cemetery

The pioneer Carlisle community was named for W. Augustus "Uncle Gus" Carlisle (1849-1920), who settled here with his wife Lizzie (Spikes) (d. 1914) in 1890. A cattleman and a prominent landowner, Carlisle made significant contributions to the development of the area, including a donation of land for a school. In 1918 he set aside this part of his property for use as a public cemetery. It was first used for the burial of George W. Wood (b. 1879), a victim of the 1920 influenza epidemic. Other graves include those of pioneer area settlers and early leaders of Carlisle.



Founded 1979

Carlisle Cemetery Heritage Association dedicates this marker to all contributors in grateful appreciation for their help in the restoration of the Carlisle Cemetery.

Erected 1987

# Carlisle Cemetery

A little hard to see, but this is the first person buried in the Carlisle Cemetery, George W. Wood, born on February 22, 1879 and dies February 8, 1920. He was just shy of turning 42 when he died of the flu epidemic one hundred years ago. "Tho' lost to sight, to memory dear."



*Jiles Thompson, 1853-1932*



*J.B. Moore, Sept. 26, 1854 - Jan. 11, 1934*

## Read More

- <https://www.tshaonline.org/handbook/entries/carlisle-tx-lubbock-county>
- [https://military-history.fandom.com/wiki/Reese\\_Air\\_Force\\_Base](https://military-history.fandom.com/wiki/Reese_Air_Force_Base)

# Discovering Pears Soap

Over the past two to three years, I have changed what soaps I use. Previously, I regularly used the Dial glycerin soap in the cranberry color. It was a nearly clear, red soap that I used for many years. However, when money became almost nonexistent by late 2019, I really could not afford that soap anymore. While it was a middle of the road price, I needed to stretch the dollar almost to the break point. So that is when I explored Dollar Tree to see what soaps they had since I could get them for, well, a dollar. The store had a good variety, but what I settled on was on was the classic Palmolive soap. Now mind you that I was not particularly wanting to smell like my grandmother or even my great grandmother since the soap was quite popular then, but when Dollar Tree was selling it as a pack of three for a dollar, I went ahead and tried it. It was fine. It had a very old scent, but the bar lasted for almost a week. I definitely got my money's worth! Dollar Tree also sells another pair of soap that I noticed. It was a single bar, like most of the soaps they carry, but one I knew I had seen before somewhere. It turns out that I saw the soap in newspaper advertisements from the late 1800s! Having worked for the museum in Leadville, I regularly searched through historic newspapers and saw various ads for the soap over many years in the papers. So, I finally bought a bar to try it. The bar was a flat oval in an amber color and completely clear. It's hard to describe the smell, but it faintly reminded me of cinnamon and some other spices. It was very pleasant, but very different from other soaps. So, here is some information about the soap and the company. Wikipedia states:

“Pears transparent soap is a brand of soap first produced and sold in 1807 by Andrew Pears, at a factory just off Oxford Street in London, England. It was the world's first mass-market translucent soap. Under the stewardship of Thomas J. Barratt, A. & F. Pears initiated a number of innovations in sales and marketing. Lever Brothers, now Unilever, acquired A. & F. Pears in 1917. Products under the Pears brand are currently manufactured in India and Saudi Arabia for global distribution.”



*I can find the Pears soap at Dollar Tree.*

## Pears' Soap

has been established in London **100 YEARS** both as a **COMPLEXION** and as a **SHAVING SOAP**, has obtained **19** INTERNATIONAL AWARDS, and is now sold in every city of the world.

*It is the purest, cleanest, finest,*

*The most economical, and therefore*

*The best and most popular of all soaps*

for GENERAL TOILET PURPOSES; and for use in the NURSERY it is recommended by thousands of intelligent *mothers* throughout the civilized world, because while serving as a cleanser and detergent, its emollient properties prevent the chafing and discomforts to which *infants* are so liable. **PEARS' SOAP** can now be had of nearly all Druggists in the United States, BUT BE SURE THAT YOU GET THE GENUINE, *as there are worthless imitations.*

*Pueblo Chieftain. Tuesday, July 8, 1890. Page 7.*

# Discovering Pears Soap

The A. & F. Pears refers to Andrew and his grandson Francis when he joined the business in 1835, renaming the business to A & F Pears.

According to the box, Pears soap was established in 1807. The soap today is made in India, which explains the spice scent. The marketing statement on the box is:

“Pears, a soap with over 200 years of heritage, is prepared with a unique process of moulding & then matured until it reaches pure transparency. Each bar is still made natural oils and filtered for purity. It is then finished by hand & checked by eye. So what you get in the end is a beautiful pure & gentle soap.”

The box is printed in English, French, and Spanish (as are many international products). The soap is wrapped in a plastic package before being put in the box. Until 2009, the soap stayed very similar to the original soap from the 1800s. But like with many companies, Unilever wanted to mess with the formula! The company changed the soap in 2009, but not without criticism. They changed the formula to make it similar to the original formula but did not go back to the original formula! (I’m looking at you Coca-Cola from the 1980s!)

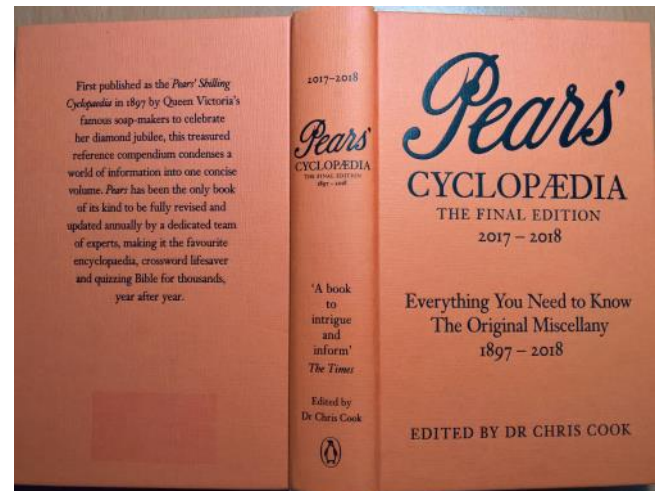
**Pears' Soap**  
**Fair white hands.**  
**Bright clear complexion**  
**Soft healthful skin.**  
**“PEARS’—The Great English Complexion SOAP,—Sold Everywhere.”**

*Pueblo Daily Chieftain. October 24, 1888. Page 7.*

## Read More

- [https://en.wikipedia.org/wiki/Pears\\_\(soap\)](https://en.wikipedia.org/wiki/Pears_(soap))
- [Wikipedia Information](#)
- <https://en.wikipedia.org/wiki/Encyclopedia>

A fun note, Pears soap produced a cyclopedia starting in 1898. Production of it changed to Pelham Books in 1959 and again to Penguin in 1988, who published the book until 2017 with the 2017-2018 issue, “The Final Edition”.



## “Cyclopædia”

Today, we know the word as *encyclopedia*, but the earlier word was *cyclopædia*, *cyclopeda*, or *cyclopedien*. It comes from the Koine Greek word ἐγκύκλιος παιδεία (*enkyklios paideia*), which basically means “general education” or “complete knowledge”.

---

*Good  
morning*  
Have you used  
**PEARS' SOAP?**

---

*Pueblo Daily Chieftain. July 17, 1889. Page 7.*

# Camel Corps?

Remember that time when the United States thought importing and training camels was a good idea? No? Well, that's because it happened in 1856! Here is a little snippet of information of this interesting aspect of military history.

The USS "*Supply*'s next assignment was perhaps the most unusual duty of her career. United States Secretary of War [under President Franklin Pierce] Jefferson Davis [(yes, that Jefferson Davis who was president of the Confederate States of America)] was extremely interested in developing the territory recently acquired by the United States from Mexico as a result of its victory in the Mexican-American War and arranged for an expedition to obtain camels for experimental use in a United States Army Camel Corps in the desert west of the Rocky Mountains. *Supply*, commanded by Lieutenant David Dixon Porter – who later would win fame in the American Civil War – departed New York on 4 June 1855 and headed for the Mediterranean to obtain the camels. The ship reached Smyrna in the Ottoman Empire on 30 January 1856, loaded 21 (some reports say 31) camels, and sailed on 15 February 1856 for the Gulf of Mexico. Porter delivered the animals to Indianola, Texas, in May 1856. The ship had reached the halfway point on this curious mission for she was soon on her way back to the Levant for another load of camels which she transferred to Suwanee on the Mississippi River early in February 1857."

Photo No. NR&L(O) 21480 USS Supply after the Civil War



*USS Supply as seen docked post Civil War.*

## Read More

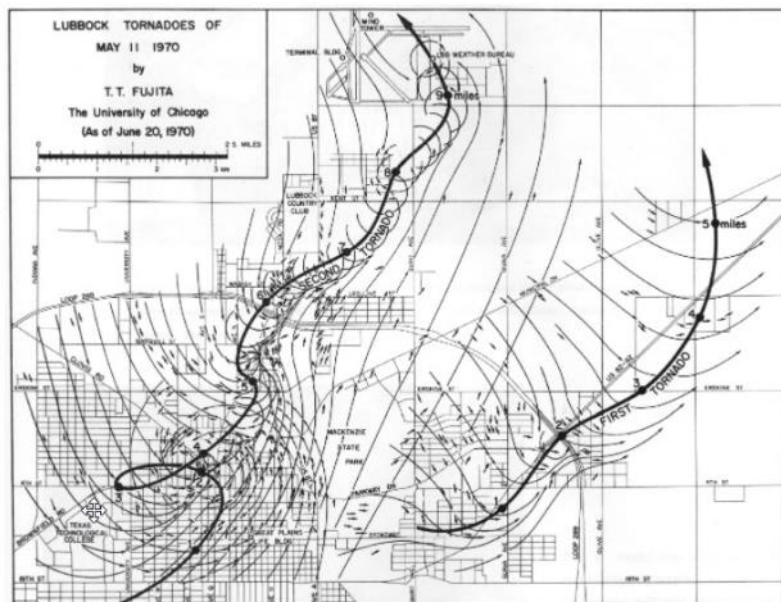
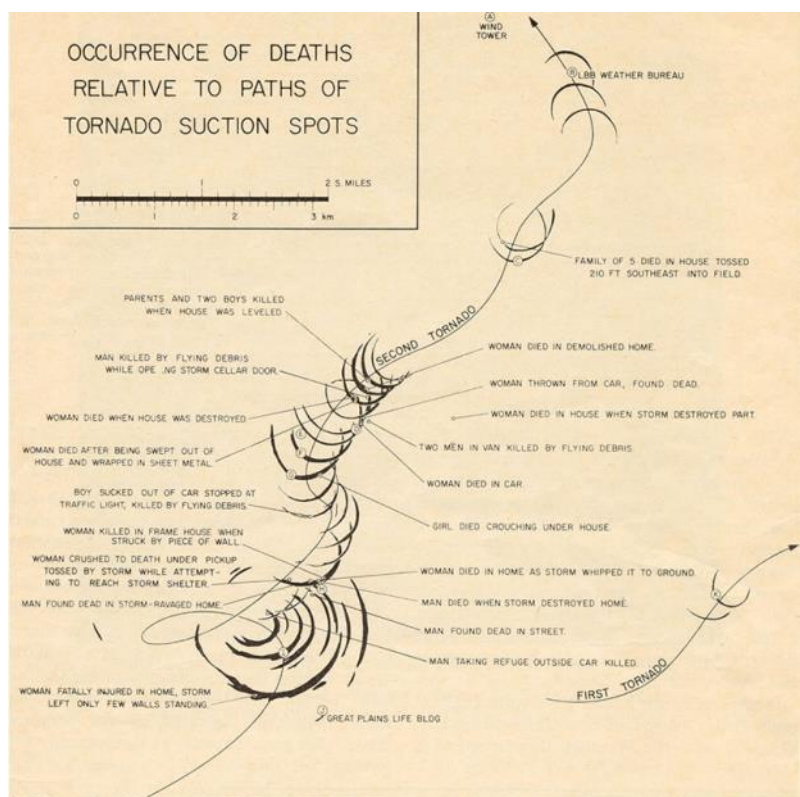
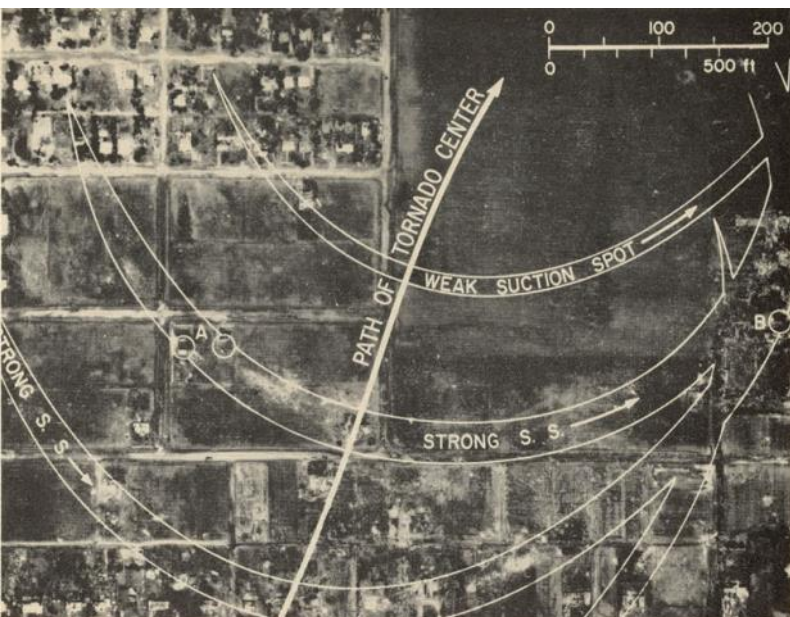
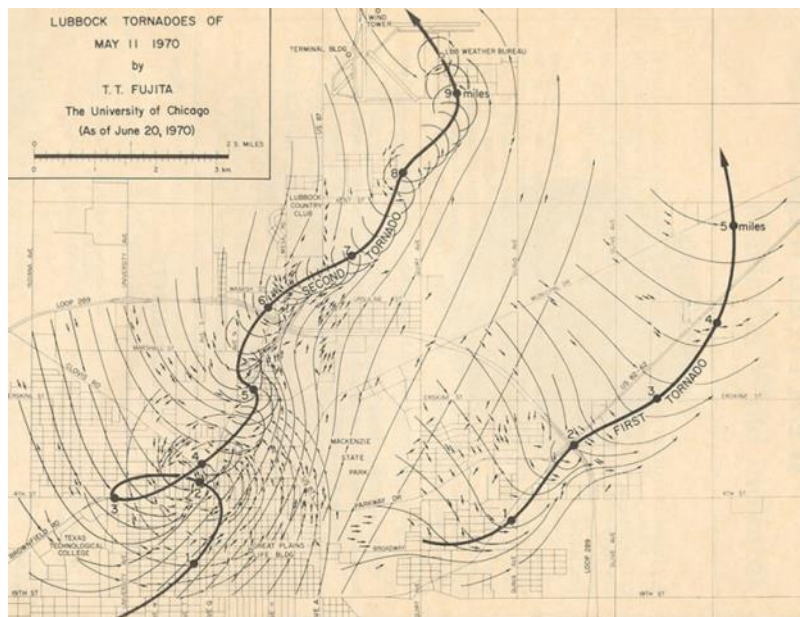
- <https://www.thoughtco.com/camels-in-the-us-army-4018915>
- [https://en.wikipedia.org/wiki/USS\\_Supply\\_\(1846\)](https://en.wikipedia.org/wiki/USS_Supply_(1846))

'Sup?



# 1970 Lubbock Tornado

On May 11 of 1970, Lubbock got hit by two tornadoes in the middle of the evening. The first tornado started a little east of downtown and went about five miles. However, another tornado developed with such intensity that it cause catastrophic destruction of the likes rarely seen. Because of this tornado, studies starting nearly immediately after the event determined that this tornado was an F5. This study also created this new scale called the F Scale, or Fujita Scale, developed by Tetsuya “Ted” Fujita. The scale is based on damage, not on wind speed. May of 2020 was the 50th anniversary of the event that was going to have a dedication of a new memorial, except that we were in a lockdown. See next page.



Map of the events of May 11, 1970, as researched by Dr. Ted Fujita

## Read More

For everything you could want to know about the 1970 tornado that hit Lubbock, go to:

- [www.lubbocktornado1970.com](http://www.lubbocktornado1970.com)

# Lubbock Tornado Memorial

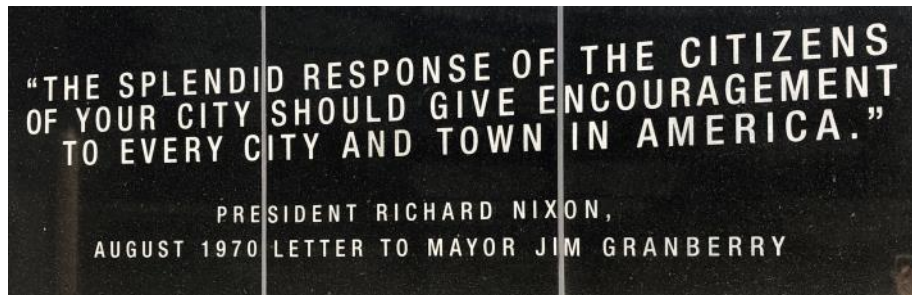


May 11, 1970 was a bad day—more like night. Lubbock had a spring time storm resulting in a very strong tornado hitting Lubbock.

*“At 9:46pm that night, all the electric clocks in Lubbock stopped. As time stood still, the most devastating tornado in history ravaged huge portions of my city...”*

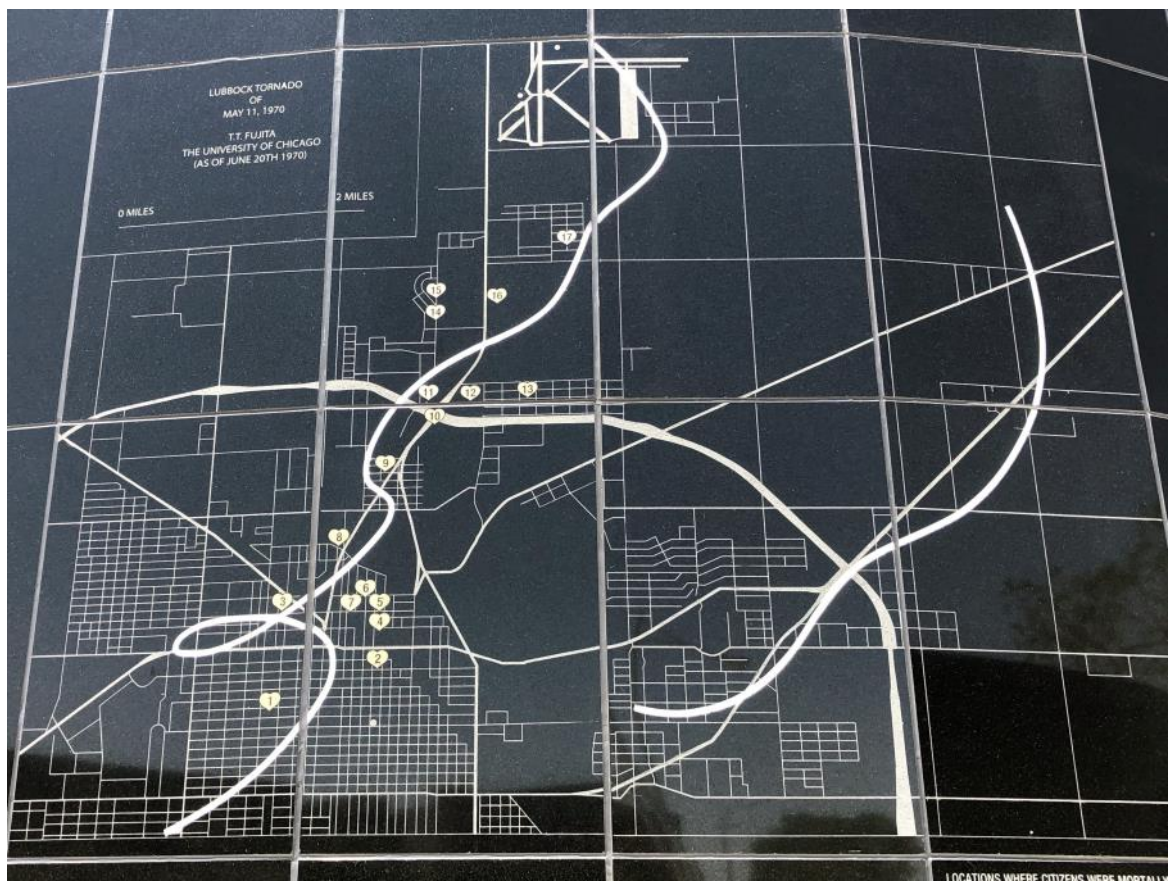
*W. Hershel Sharp, Chief  
Lubbock Fire Department, 1970.*

It was because of this tornado, the main one was later determined to be a F5, that the study of tornados started and a scale developed determining strength, the F scale.



*“The splendid response of the citizens of your city should encouragement to every city and town in America.”*  
*President Richard Nixon*

<https://downtownlbk.us/tornado-memorial/>



# Final Thought

# de Stolfe Journal.....

## How to Fry Pancakes.

The frying of pancakes is as important as the mixing. The fire needs to be as clear and as strong as for broiling beefsteak and the griddle next to burning hot, when it will only take the slightest possible greasing to turn the cakes perfectly. Grease with a slice of fat pork on a fork, with a handle 15 inches long. These cook's forks are sold with wooden handles, the model of a miniature pitchfork, and they are wonderfully convenient, as they allow one to lift meat or grease a griddle without bringing the face near the stove.

Have two or three plates heating to put the cakes on—a cold plate makes a cake fall instantly—and send to table in relays as fast as they are fried.

Delicate griddle cakes, like rice cakes or Adirondacks, are fried of small size, one large spoonful to each cake. Buckwheat pancakes are larger—the size of a tea saucer—and all cakes should be well browned—not golden brown, which does not allow heat enough to change the gluten into sugar and give the best flavor.

*The Evening Chronicle. September 9, 1893. Page 4.*

## How to Fry Pancakes.

The frying of pancakes is as important as the mixing. The fire needs to be as clear and as strong as for broiling beefsteak and the griddle next to burning hot, when it will only take the slightest possible greasing to turn the cakes perfectly. Grease with a slice of fat pork on a fork, with a handle 15 inches long. These cook's forks are sold with wooden handles, the model of a miniature pitchfork, and they are wonderfully convenient, as they allow one to lift meat or grease a griddle without bringing the face near the stove.

Have two or three plates heating to put the cakes on—a cold plate makes a cake fall instantly—and send to table in relays as fast as they are fried.

Delicate griddle cakes, like rice cakes or Adirondacks, are fried of small size, one large spoonful to each cake. Buckwheat pancakes are larger—the size of a tea saucer—and all cakes should be well browned—not golden brown, which does not allow heat enough to change the gluten into sugar and give the best flavor.

The de Stolfe Journal is a publication made by Robert-George de Stolfe. The first issue was published in March 1986 as the de Stolfe Journal and published irregularly until 1998 (17 issues total). The *Candid* variety of the Journal started in July 2012, with a production of over 60 regular and special issues, with now the *Candid* dropped from the name. Archives of all issues—including the original ones (1980s-1990s)—are available on the website: [www.destolfe.com](http://www.destolfe.com)

**Publisher/Owner/Editor**  
Robert-George de Stolfe

### Graphics/Layout\*






Robert-George de Stolfe

*\*Unless otherwise accredited, the graphics and photos are by Robert-George de Stolfe or possibly from public domain. In some cases, the original source cannot be determined.*

This publication is published solely as a digital format. All content—unless attributed to some other source, including web sources, or from public domain sources—is original content by Robert-George de Stolfe. Public domain sources might or might not be specifically attributed.

The reader of this content has right to download and view the content for personal enjoyment. However, if someone wants to use the content for any other purpose, permission must be requested in writing and approved by Robert-George de Stolfe.

Copyright © 2022, Robert-George de Stolfe

-  Journal Archive [www.destolfe.com](http://www.destolfe.com)
-  Top Hand Graphics [www.tophandgraphics.com](http://www.tophandgraphics.com)
-  RG eMail [rgdestolfe@yahoo.com](mailto:rgdestolfe@yahoo.com)
-  RG LinkedIn [www.linkedin.com/in/rgdestolfe](http://www.linkedin.com/in/rgdestolfe)
-  RG YouTube [www.youtube.com/channel/UCXqM8QWWaVPwzLa0ccZ46Cw](http://www.youtube.com/channel/UCXqM8QWWaVPwzLa0ccZ46Cw)

Robert-George de Stolfe

PO Box 16156

Lubbock, Texas 79490

806.470.5867

[rgdestolfe@yahoo.com](mailto:rgdestolfe@yahoo.com)