

# de STOLFE

## JOURNAL

ISSUE 15  
WINTER 1993

### CONTENTS

A "REVOLUTIONARY" IDEA 2  
 ADDITION 6  
 ADVERTISEMENT 6  
 ALADDIN 1  
 COMMENTS ABOUT EDITOR 2  
 CORRECTION 5  
 COUPON 6  
 FILLMORE MINI-SERIES 3+4  
 GARFIELD COMICS 2+5  
 HOLIDAYS 6  
 HOME ALONE 2 5  
 HURRICANE PATH MAP 5  
 HURRICANES 1  
 KILIBAN CATS 2+5  
 MIAMI METRO ZOO 2  
 MISSING CAT 6  
 PRESIDENT CLINTON 1  
 RAINFORESTS 6  
 RATINGS 2  
 RECYCLING 2  
 RECYCLING SYMBOLS 1  
 SHORT NOTE 5  
 VACATION TIPS 6

### HURRICANES



SO FAR THE 90'S SEEM TO BE THE YEARS FOR HURRICANES. IN 1989, HURRICANE HUGO SLAMMED INTO SOUTH CAROLINA AND CHARLESTON. HUGO LEFT MILLIONS MAYBE EVEN BILLIONS OF DOLLARS IN DAMAGE. IN 1992, HURRICANE ANDREW BASHED INTO SOUTH FLORIDA AND LOUISIANA. THEN JUST AFTER, HURRICANE INIKI RAMMED INTO HAWAII. ALL THREE CAUSED MUCH DAMAGE. THERE ARE ALSO COUNTLESS OTHER HURRICANES/TYPHOONS THAT HIT PLACES AROUND THE GLOBE. FOR RELATED STORIES, LOOK ELSE WHERE IN THE JOURNAL, ALSO SEE MAP ON 5.

### CREDITS

FOUNDED AND PRODUCED BY  
 ROBERT-GEORGE de STOLFE,  
 EDITOR.  
 MADE ON ALDUS PAGEMAKER 4.0.  
 PRINTED ON RECYCLABLE PAPER.  
 PLEASE RECYCLE OR PASS ON  
 WHEN FINISHED.  
 © COPYRIGHT 1993  
 RG de STOLFE

### PRESIDENT CLINTON

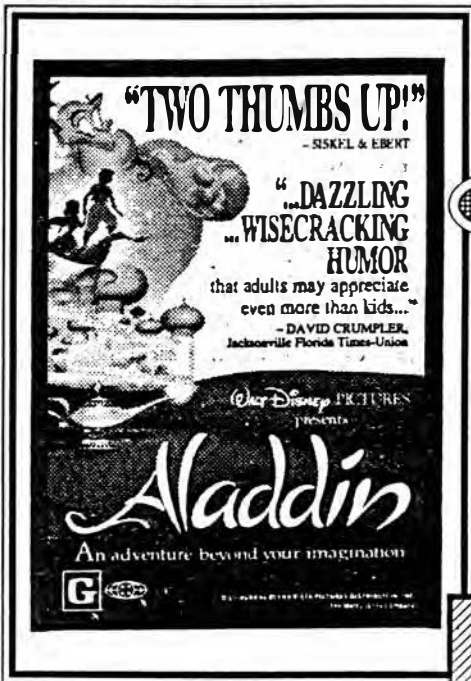
AS OF MID JANUARY, BILL CLINTON WILL BE SWORN IN AS PRESIDENT. HE IS GOING TO TRY TO GET US OUT OF THIS RECESSION THAT WERE IN. THE ONLY THING IS THERE WON'T BE ANY IMMEDIATE IMPROVEMENT. SEVERAL PRESIDENTS MAY NEED TO COME AND GO BEFORE WE ARE OUT. THE RECESSION RIGHT NOW DOES NOT SEEM TOO BAD, ALTHOUGH I AM NOT TOO AFFECTED BY IT SINCE I AM IN COLLEGE. WE WILL SEE HOW HE DOES AS PRESIDENT JUST AS SOON AS THE NEW YEAR COMES.

### RECYCLING SYMBOLS

EVER WONDER WHAT THOSE LITTLE TRIANGLES WITH THE NUMBERS IN THEM ON THE BOTTOM OF THE PLASTIC CONTAINERS MEANT? THOSE NUMBERS AND LETTERS REPRESENT THE TYPE OF PLASTIC THAT THE CONTAINER OR OBJECT IS MADE OF. THE SYMBOL IS FOR RECYCLING PURPOSES. BELOW ARE THE NUMBERS, LETTERS, AND CHEMICAL NAMES OF THE PLASTICS.

1 PETE POLYETHYLENE TEREPHTHALATE  
 2 HDPE HIGH DENSITY POLYETHYLENE  
 3 V POLYVINYL CHLORIDE  
 4 LDPE LOW DENSITY POLYETHYLENE  
 5 PP POLYPROPYLENE  
 6 PS POLYSTYRENE  
 7 OTHER OTHER PLASTICS NOT MENTIONED ABOVE

THESE SYMBOLS ARE FROM THE SPI, SOCIETY OF PLASTIC INDUSTRIES.  
 -ENGINEERING MATERIALS AND PROCESSES - TEXT



PICTURE IT ... A DOOR YOU DIDN'T HAVE TO CLOSE. THAT WAS WHAT THEOPHILUS VANKANNEL INVENTED IN 1888. THIS DOOR CONSISTS OF FOUR PANELS ROTATING AROUND A PIVOT, CUTTING HEAT AND COOLING LOSSES, MUFFLING NOISE, AND CAPTURING DIRT. POET MAY SWENSON CAPTURED THE SOUND: "SLUFF, SLUFF, SLUFF, SLUFF (RUBBER BOTTOMS OF DOORS), FLICK, FLICK, CLICK, CLICK (WOMEN IN, WOMEN OUT)." THE FIRST REVOLVING DOOR APPEARED IN A POST OFFICE IN ST. LOUIS, MISSOURI.

BY 1905, THE DOORS BECAME A FIXTURE ON MAIN STREET AND IN EUROPE. THIS DOOR IS A GREAT ENERGY SAVER AND ENVIRONMENTALLY FRIENDLY. I ONLY WISH BUILDING CODES ALLOWED IT MORE. METROPOLITAN HOME, JUNE 1991

MIAMI METRO ZOO

HURRICANE ANDREW CAUSED SIGNIFICANT DAMAGE IN SOUTH FLORIDA. THE MIAMI METRO ZOO IN MIAMI HAD QUITE A FEW LOSSES BECAUSE OF THE HURRICANE. THE DAMAGE WAS ESTIMATED AROUND 20 MILLION. THERE WAS NOT A LOT THAT THE ZOO COULD HAVE DONE AND UNFORTUNATELY, THERE WERE SEVERAL ANIMALS KILLED. SOME OF THE ANIMALS WERE SENT FOR SPECIAL CARE AT OTHER PLACES. MANY OF THE ANIMALS WERE NOT HURT, OR VERY LITTLE, BUT WERE ROAMING THE STREETS, INCLUDING AN ELEPHANT AND MANY BABOONS. THE DAMAGE WAS GREAT, BUT LIKE EVERYONE ELSE IN SOUTH FLORIDA, THEY WILL RECOVER FROM IT. -FLORIDA TIMES UNION

RECYCLING

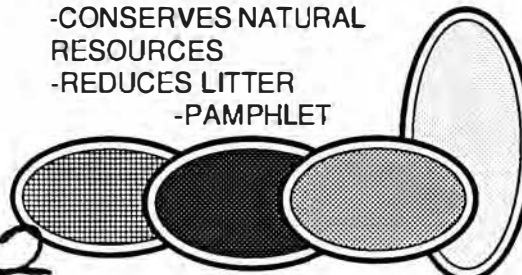
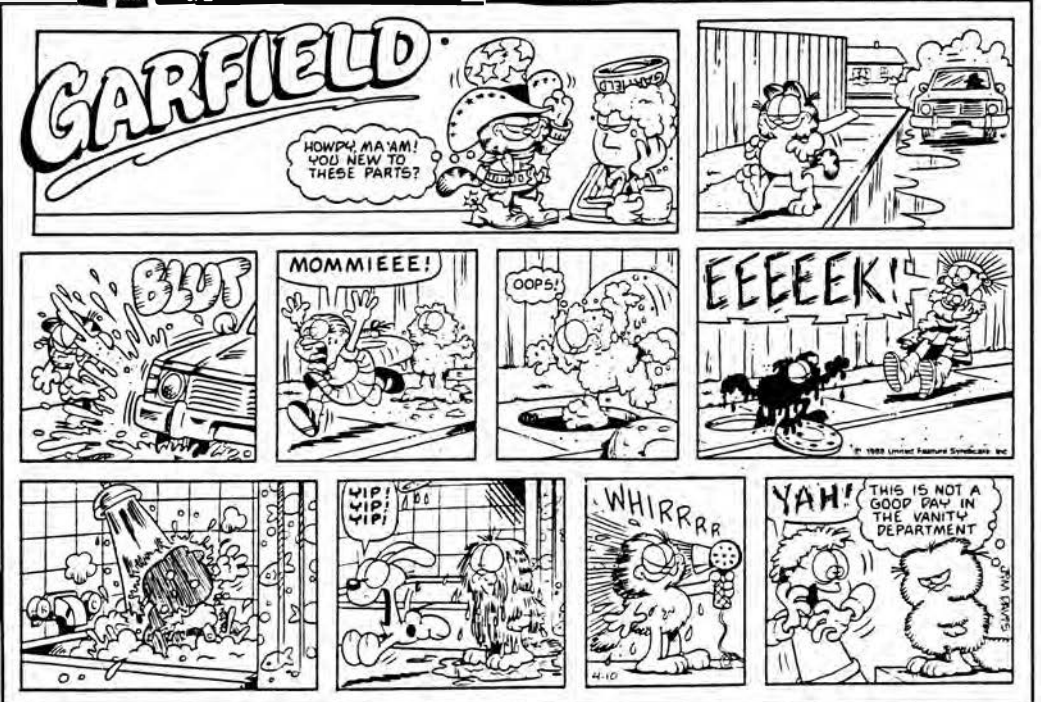
- RECYCLING CREATES:
  - JOBS
  - REDUCES THE AMOUNT OF "TRASH" PUT INTO LANDFILLS
  - REDUCES ENVIRONMENTAL DAMAGE CAUSED BY LANDFILLS
  - SAVES ENERGY
  - CONSERVES NATURAL RESOURCES
  - REDUCES LITTER
- PAMPHLET

EVER WONDER WHAT THE LETTER(S) IN THE BOX BY THE MOVIE ADS MEANT? BASICALLY IT IS THERE FOR THE PEOPLE TO KNOW HOW THE MOVIE RATES AGAINST A SCALE OF APPROPRIATENESS FOR CHILDREN TO WATCH THE SELECTED MOVIE. IT IS NOT REQUIRED FOR THE MOVIES TO BE RATED, BUT MOST OF THE FILM MAKERS HAVE THEIR FILMS RATED. BELOW IS A LIST OF THE DIFFERENT RATINGS AND WHAT THEY MEAN.

- G -GENERAL AUDIENCES, ALL AGES ADMITTED
- PG -PARENTAL GUIDANCE SUGGESTED, SOME MATERIAL NOT SUITED FOR CHILDREN
- PG-13 -PARENTS STRONGLY CAUTIONED, SOME MATERIAL NOT APPROPRIATE FOR CHILDREN UNDER 13
- R -RESTRICTED, CHILDREN UNDER 17 NEED ADULT ACCOMPANIMENT
- NC-17 -NO CHILDREN UNDER 17 ADMITTED
- X -REPLACED BY NC-17 BUT NOT THE SAME AS NC-17
- XXX -NEEDS NO EXPLANATION, SELF APPLIED RATING

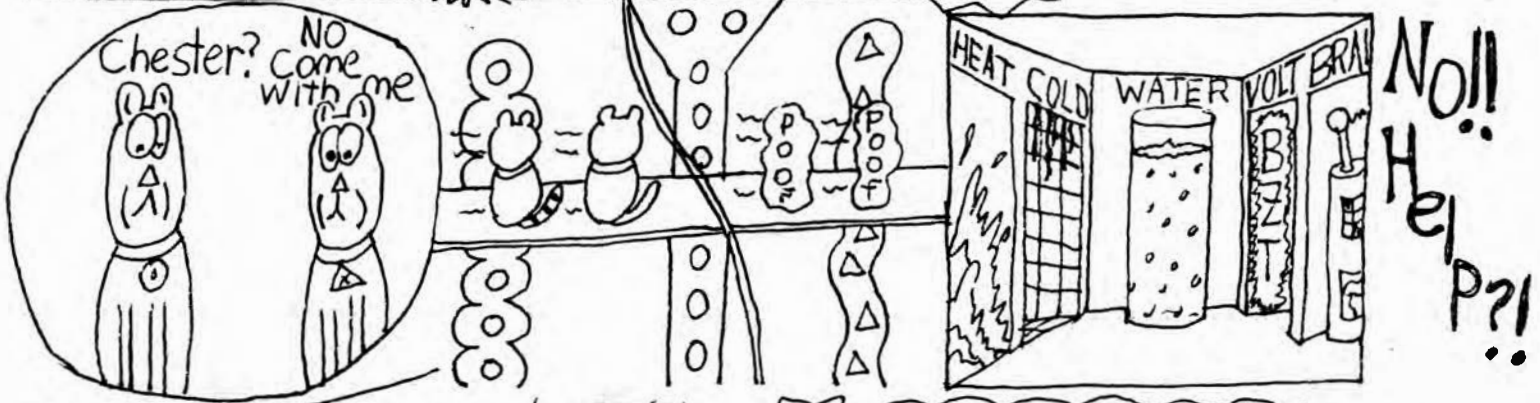
-PAMPHLET

SINCE THE LAST ISSUE OF THE JOURNAL, I GOT A LETTER FROM A READER WHO WOULD LIKE TO KNOW MORE ABOUT THE EDITOR PERSONALLY. WELL, LETS START WITH SOME GENERAL FACTS. I LIVE IN JACKSONVILLE, FLORIDA WITH MY MOM AND MY CAT. IN FEBRUARY, I WILL HAVE BEEN HERE FOR FOUR YEARS. I GO TO FLORIDA COMMUNITY COLLEGE IN JACKSONVILLE (FCCJ) AND HAVE BEEN THERE FOR A YEAR AND A HALF. WHILE IN COLLEGE, I AM PLANNING TO GET AN ASSOCIATE OF SCIENCE DEGREE IN CADD (COMPUTER AIDED DESIGN AND DRAFTING) AND AN ASSOCIATE OF ARTS DEGREE. I PLAN TO BE AN ARCHITECT SPECIALIZING IN THE REMODELING OF EXISTING HOUSES. I AM ABLE TO GO TO COLLEGE BECAUSE OF SCHOLARSHIPS: I HAVE SEVERAL. I ALSO WORK ON CAMPUS. I WORK FOR STUDENT ACTIVITIES ON KENT CAMPUS. THERE, I MAINLY WORK IN THE ART GALLERY. I WILL HAVE WORKED IN THE GALLERY FOR ONE YEAR AS OF JANUARY. I MAINLY SIT IN THE GALLERY GREETING THE PEOPLE SEEING THE EXHIBITS, BUT I ALSO HAVE STARTED ACTUALLY ORGANIZING THE SHOWS AND HANGING THEM. IN ADDITION, I SERVE PUNCH TO PEOPLE DURING THE OPENINGS. ALSO IN COLLEGE, I HAVE TAKEN SOME ART CLASSES, NAMELY DESIGN I AND DRAWING I, AND I HAVE DONE MANY PIECES OF ART. FINALLY, MY LIFE MAINLY DEALS WITH SCHOOL, SO THERE IS NOT REALLY ANYTHING ELSE TO SAY, BUT AFTER COLLEGE I MAY CONTINUE WITH MY EDUCATION OR START WORKING FOR A COMPANY.

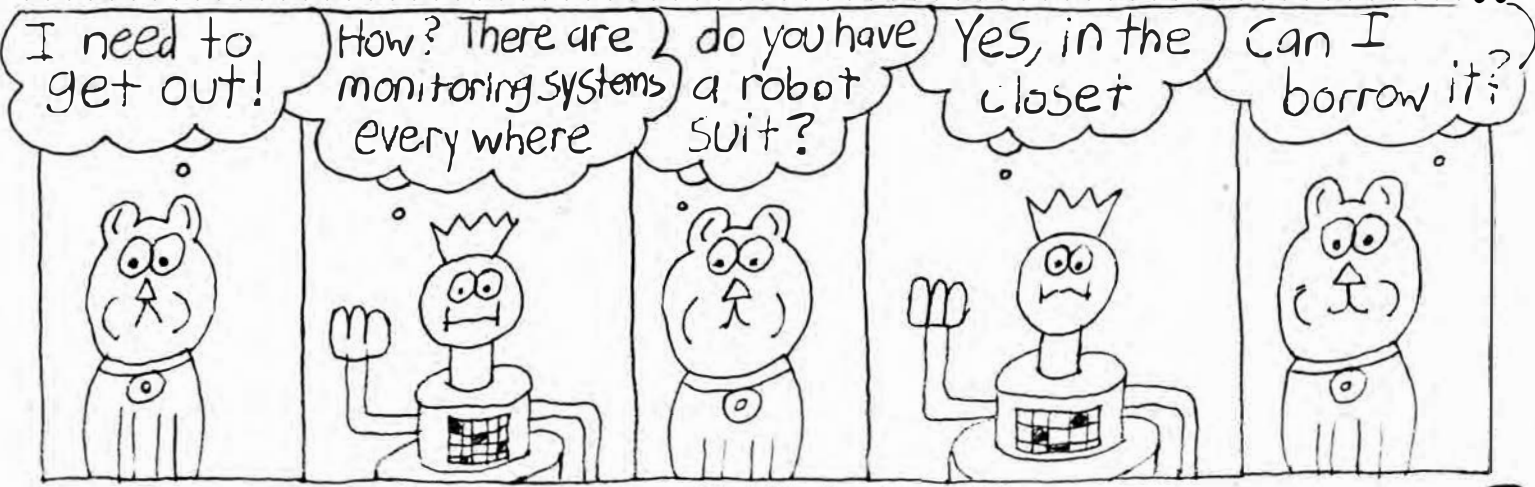


**FILLMORE** BY: RG de STOLFE

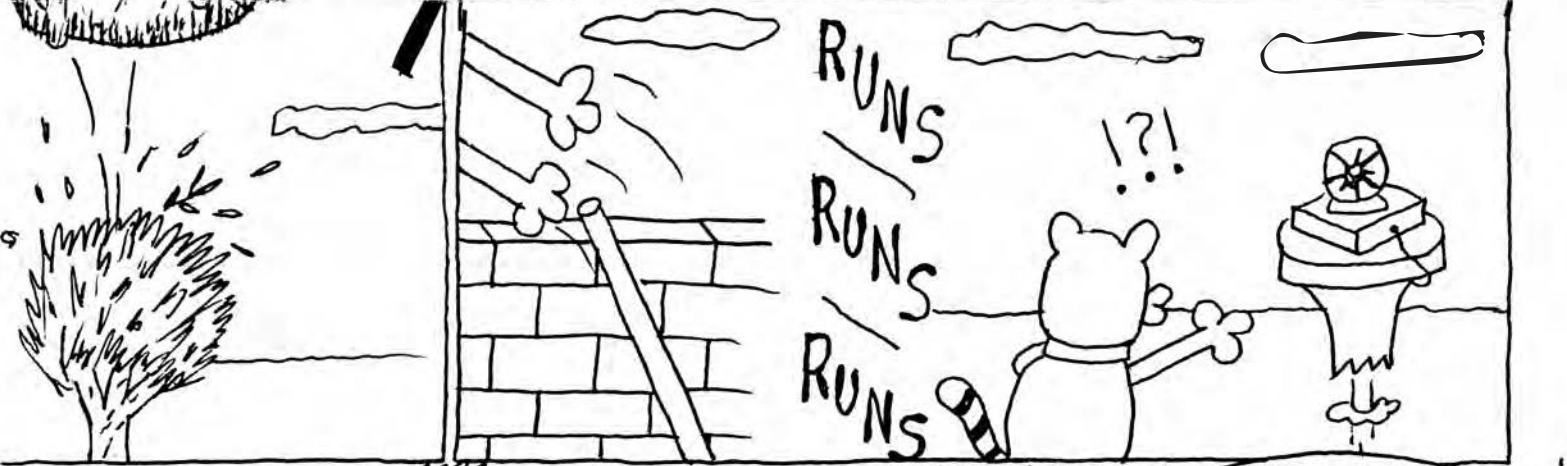
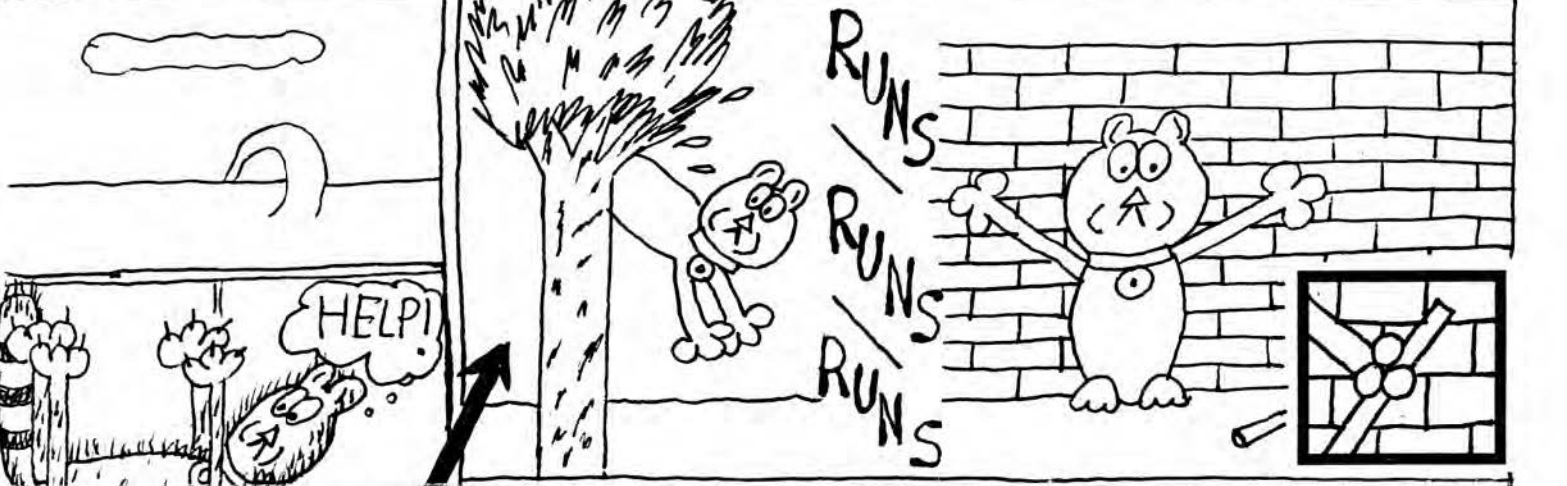
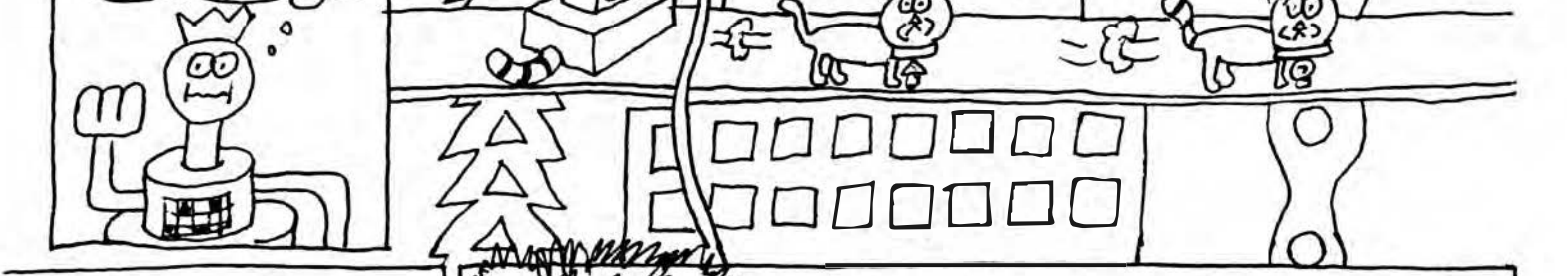
**WHEN WE LAST SAW FILLMORE...**



**...AND NOW THE CONCLUSION OF THE MINI-SERIES**



Yes, but be careful  
the monitoring  
system detects  
escapees

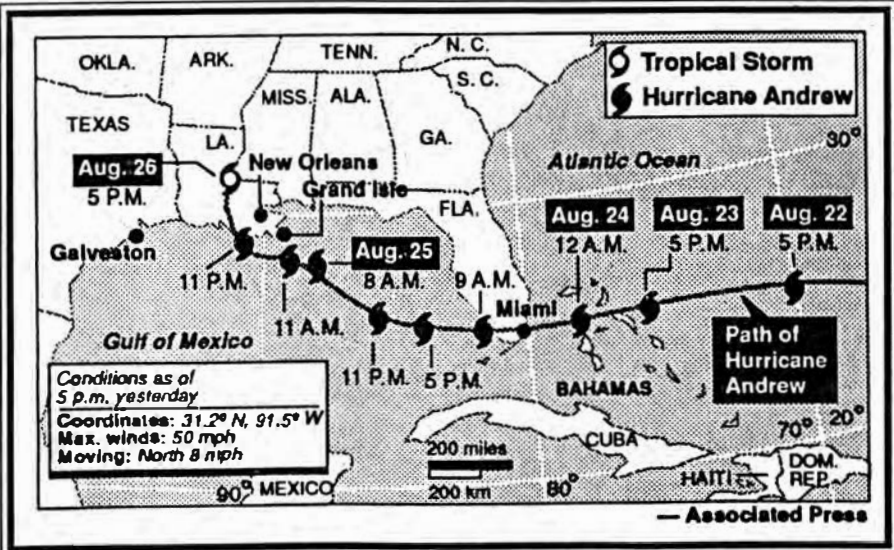


I'm throwing  
this thing out!!

Here We Go Again!

THE  
END

THOUGH ISSUE 14 WAS MY BEST ISSUE (BEFORE THIS ISSUE) THERE WERE MANY SMALL DETAILS NOT TAKEN CARE OF. FIRST, YOU MAY HAVE NOTICED THAT SOME ARTICLES ESPECIALLY *LIGHT BULBS*, *THE SCOOP ON ICE CREAM*, AND *VANILLA AND CHOCOLATE*, JUST STOPPED WITHOUT FURTHER DIRECTION OF THE ARTICLE. SORRY ABOUT THIS, I JUST FORGOT ABOUT THEM. NEXT, UNEXPLAINABLE WORDS HAVE APPEARED, NOT BY ME BUT BY THE COMPUTER. I DIDN'T DO AS WELL OF A CAREFUL PROOFREADING AS I THOUGHT. LAST, THE JOURNAL AS A WHOLE COULD PROBABLY USE SOME FINE TUNING, BUT TIME PREVENTED A THOROUGH REVIEW. SORRY ABOUT THESE PROBLEMS, AND I HOPE I FIXED SOME OF THESE IN THIS ISSUE.



**THE #1 MOVIE IN AMERICA!**

**HOME ALONE 2**

LOST IN NEW YORK

PG

DO NOT COPY OR REPRODUCE WITHOUT PERMISSION



*SUBSCRIPTION FORM*

DATE \_\_\_\_\_

NAME \_\_\_\_\_

ADDRESS \_\_\_\_\_

BESIDES ISSUE 14 AND 15 ARE YOU A RECEIVER OF THE JOURNAL?

YES  NO

LAST ISSUE RECEIVED \_\_\_\_\_

NOTE: IF THIS FORM IS NOT MAILED TO THE ADDRESS ON THE BACK OF THIS NEWS LETTER, YOU WILL NOT GET ANOTHER ISSUE. THIS IS BOTH NECESSARY AND REQUIRED. IF YOU SENT THE FORM IN FROM ISSUE 14, YOU DO NOT NEED TO SEND THIS FORM IN. THANK YOU.



*EVER WONDER HOW SOMETHING WAS MADE? IF SO WRITE ME AND I'LL RESEARCH THE SUBJECT AND PUT THE RESULTS IN THE NEXT JOURNAL AS WELL AS GIVE YOU A ONE PAGE SUMMARY OF THE PROCESS. JUST WRITE HOW IS IT MADE? IN WITH YOUR QUESTION AND MAIL TO THE ADDRESS ON THE BACK OF THE JOURNAL.*

## VACATION TIPS

HERE ARE SOME TIPS FOR THOSE WHO ARE GOING TO GO ON A TRIP.

- LEAVE IRREPLACEABLE POSSESSIONS AND ESSENTIAL PAPERS, EX SS CARD, AT HOME
- KEEP PLANE/BUS TICKETS ON YOU AT ALL TIMES. THEY ARE AS GOOD AS CASH.
- CARRY LITTLE CASH IN SMALL DENOMINATIONS WITH YOU AND USE TRAVELERS CHECKS AND CREDIT CARDS.
- KEEP RECORDS AND PHOTO COPIES OF EVERYTHING AND KEEP ORIGINALS IN HOTEL SAFE.
- ALSO KEEP AIRPLANE TICKETS AND SUCH IN HOTEL SAFE.
- TOURISTS ARE TARGETS FOR PICKPOCKETS, DRESS APPROPRIATELY AND KEEP AWARE OF YOUR SURROUNDINGS AS WELL AS A FIRM GRIP OF ANYTHING YOU CARRY AND YOUR WALLET.
- BE KNOWLEDGEABLE OF FOREIGN EXCHANGE RATES SO YOU ARE NOT CHEATED.
- BE AWARE OF STRANGERS WHO ARE OVERLY ANXIOUS TO HELP YOU.
- LEARN ABOUT YOUR SURROUNDINGS. ASK LOCAL RESIDENTS ABOUT PROBLEM AREAS AND TRY TO AVOID THEM.
- FLORIDA TIMES UNION

## ADDITION

IN ISSUE 14, THE ARTICLE *CHANGE OF HOST* WAS ABOUT THE NEW HOST OF *THIS OLD HOUSE* AND THE PROJECTS THEY DID. IN ADDITION TO THAT, THEY DID A GREEK REVIVAL IN BOSTON, A HOUSE CALLED KIRKSIDE (ON THE SIDE OF A CHURCH), AND CURRENTLY A RANCH IN BOSTON. I WILL KEEP YOU UPDATED WITH *THIS OLD HOUSE* IN THE ISSUES TO COME.

## HOLIDAYS

BY THE TIME YOU GET THIS JOURNAL, IT MAY BE TOO LATE TO WISH YOU HAPPY HOLIDAYS. BUT HAPPY TO THE FOLLOWING GONE AND COMING HOLIDAYS: HAPPY HALLOWEEN, HAPPY COLUMBUS DAY, HAPPY ROSH HASHANAH, HAPPY THANKSGIVING, HAPPY HANUKKAH, MERRY CHRISTMAS, HAPPY NEW YEAR, HAPPY MARDI GRAS, AND HAPPY VALENTINES DAY. HAPPY HAPPY HOLIDAYS!!

## MISSING CAT

A PURE WHITE HOUSE CAT WHO MADE HIS LIVING JUMPING THROUGH HOOPS AT KEY WEST'S MALLORY SQUARE HAS DISAPPEARED. THE CAT, SPOT, OWNED BY DOMINIQUE LEFORT DISAPPEARED FROM HIS MOTOR HOME IN LAKE BUENA VISTA AFTER THEY FLED FROM KEY WEST TO ORLANDO. IF ANYONE WERE TO FIND THIS CAT (PROBABLY IN CENTRAL FLORIDA) CONTACT *THE ORLANDO SENTINEL* AT (407) 420-5426. THE CAT IS PURE WHITE WITH GREEN EYES AND KNOWN AS SPOT. - THE ORLANDO SENTINEL



de STOLFE JOURNAL  
1363 TALBOT AVE  
JACKSONVILLE FL 32205

\* COUPON \* COUPON \* COUPON \*  
\* COUPON \*

GET HALF OFF  
OF A  
CONVERSATION

\* COUPON \*  
\* COUPON \* COUPON \* COUPON \*

THE FOLLOWING IS A SATIRE. DO NOT BELIEVE ANYTHING BELOW.

## ADVERTISEMENT

WANTED- 7'3" WHITE FEMALE WHO IS ABLE TO BUNGEE JUMP OFF A 100 STORY BUILDING WITH OUT GETTING HURT, CAN COOK A WHOLE STEER IN TWO HOURS WITHOUT GETTING HURT, WANTS A 5'2" BLACK MALE TO ISLAND ROMP EVERYWHERE IN THE WORLD WITHOUT GETTING HURT, AND WHO HAS A GOOD SENSE OF HUMOR AND A GOOD FIGURE. IF ANY SUCH PERSON EXISTS CALL JAMES "\_\_\_" HECTOR AT THE RELEASE RESORT AT 111-2345. THANK YOU.

## RAIN FORESTS

DID YOU KNOW THAT RAINFORESTS COVER 2% OF THE EARTH'S SURFACE? THAT MAY NOT SEEM LIKE MUCH BUT, IT IS HOME TO OVER HALF OF THE PLANT AND ANIMAL SPECIES ON EARTH. THEY ORIGINALLY COVERED TWICE THAT AREA. RAINFORESTS PLAY A CRITICAL ROLE IN THE ATMOSPHERE BY KEEPING THE EXCESS CARBON DIOXIDE OUT OF THE AIR, WHICH WOULD OTHERWISE ACCOUNT FOR THE SECOND LARGEST CONTRIBUTOR TO THE GREENHOUSE EFFECT. WE GET SOME OF OUR MAJOR FOOD SOURCES FROM THE RAIN FORESTS. THEY ARE: AVOCADOS, BANANAS, BLACK PEPPER, BRAZIL NUTS, CAYENNE PEPPER, CASAVA/MANIOC, CASHEWS, CHOCOLATE/ COCOA, CINNAMON, CLOVES, COCONUTS, COFFEE, COLA, CORN/MAIZE, EGGPLANT, FIG, GINGER, GUAVA, HERBAL TEAS (SUCH AS HIBISCUS FLOWER, ORANGE FLOWERS AND PEEL, AND LEMON GRASS), JALAPEÑO, LEMONS, ORANGES, PAPAYA, PAPRIKA, PEANUTS, PINEAPPLES, POTATOES, RICE, WINTER SQUASH, SWEET PEPPER, SUGAR CANE, TOMATOES, TURMERIC, VANILLA, MEXICAN YAMS, AND MANY OTHERS. NOTE THOUGHT THAT THESE FOODS DON'T JUST COME FROM SOUTH AMERICA BUT EVERYWHERE AROUND THE WORLD, EVEN AFRICA. HERE ARE SOME FIGURES TO SHOW YOU HOW FAST THE RAINFORESTS ARE CUT DOWN UNLESS WE STOP: 80 ACRES PER MINUTE; 115,000 ACRES PER DAY; 42 MILLION ACRES PER YEAR (FROM 81-90); AT LEAST 48 SPECIES OF LIFE FORMS PER DAY OR 17,500 EACH YEAR. SO AS YOU CAN SEE WE NEED TO STOP THE RUTHLESS MURDERING OF THE RAINFORESTS JUST FOR THE LAND.

-RAINFOREST ACTION NETWORK

